

# Section 1: 8-K (8-K)

**UNITED STATES  
SECURITIES AND EXCHANGE COMMISSION**  
Washington, D.C. 20549

**FORM 8-K**

**CURRENT REPORT**

Pursuant to Section 13 or 15 (d) of the Securities Exchange Act of 1934  
Date of Report (Date of earliest event reported): October 23, 2019

**KILROY REALTY CORPORATION**  
(Exact name of registrant as specified in its charter)

**Maryland**  
(State or other jurisdiction of  
incorporation or organization)

**001-12675**  
(Commission File No.)

**95-4598246**  
(I.R.S. Employer  
Identification No.)

**12200 W. Olympic Boulevard, Suite 200, Los Angeles, California, 90064**  
(Address of principal executive offices) (Zip Code)

**(310) 481-8400**

(Registrant's telephone number, including area code)

N/A

(Former name, former address and former fiscal year, if changed since last report)

**Securities registered pursuant to Section 12(b) of the Act:**

<u>Registrant</u>	<u>Title of each class</u>	<u>Name of each exchange on which registered</u>	<u>Ticker Symbol</u>
Kilroy Realty Corporation	Common Stock, \$.01 par value	New York Stock Exchange	KRC

Check the appropriate box below if the Form 8-K filing is intended to simultaneously satisfy the filing obligation of the registrant under any of the following provisions (see General Instructions A.2.):

- Written communications pursuant to Rule 425 under the Securities Act (17 CFR 230.425)
- Soliciting material pursuant to Rule 14a-12 under the Exchange Act (17 CFR 240.14a-12)
- Pre-commencement communications pursuant to Rule 14d-2(b) under the Exchange Act (17 CFR 240.14d-2(b))
- Pre-commencement communications pursuant to Rule 13e-4(c) under the Exchange Act (17 CFR 240.13e-4(c))

Indicate by check mark whether the registrant is an emerging growth company as defined in Rule 405 of the Securities Act of 1933 (17 CFR §230.405) or Rule 12b-2 of the Securities Exchange Act of 1934 (17 CFR §240.12b-2).

Emerging growth company

If an emerging growth company, indicate by check mark if the registrant has elected not to use the extended transition period for complying with any new or revised financial accounting standards provided pursuant to Section 13(a) of the Exchange Act.

**Item 2.02 Results of Operations and Financial Condition.**

On October 23, 2019, Kilroy Realty Corporation issued a press release announcing its earnings for the quarter ended September 30, 2019 and distributed certain supplemental financial information. On October 23, 2019, Kilroy Realty Corporation also posted the supplemental information on its website located at [www.kilroyrealty.com](http://www.kilroyrealty.com). The text of the supplemental information and the related press release are furnished herewith as Exhibits 99.1 and 99.2, respectively, and are incorporated by reference herein.

Exhibits 99.1 and 99.2 are being furnished pursuant to Item 2.02 and shall not be deemed “filed” for any purpose, including for the purposes of Section 18 of the Securities Exchange Act of 1934, as amended (the “Exchange Act”), or otherwise subject to the liabilities of that section. The information in this Current Report on Form 8-K shall not be deemed incorporated by reference into any filing under the Securities Act of 1933, as amended (the “Securities Act”), or the Exchange Act regardless of any general incorporation language in such filing.

**Item 7.01 Regulation FD Disclosure.**

As discussed in Item 2.02 above, Kilroy Realty Corporation issued a press release announcing its earnings for the quarter ended September 30, 2019 and distributed certain supplemental information. On October 23, 2019, Kilroy Realty Corporation also posted the supplemental information on its website located at [www.kilroyrealty.com](http://www.kilroyrealty.com).

The information being furnished pursuant to Item 7.01 shall not be deemed “filed” for any purpose, including for the purposes of Section 18 of the Exchange Act, or otherwise subject to the liabilities of that section. The information in this Current Report on Form 8-K shall not be deemed incorporated by reference into any filing under the Securities Act or the Exchange Act regardless of any general incorporation language in such filing.

**Item 9.01 Financial Statements and Exhibits.**

- (a) Financial statements of businesses acquired: None.
- (b) Pro forma financial information: None.
- (c) Shell company transactions: None.
- (d) Exhibits:

The following exhibits are furnished with this Current Report on Form 8-K:

<b>Exhibit No.</b>	<b>Description</b>
99.1**	Supplemental Operating and Financial Data for the quarter ended September 30, 2019
99.2**	Press Release dated October 23, 2019 regarding third quarter 2019 earnings

\*\* Furnished herewith.

## SIGNATURES

Pursuant to the requirements of the Exchange Act, the registrant has duly caused this report to be signed on its behalf by the undersigned hereunto duly authorized.

Kilroy Realty Corporation

Date: October 23, 2019

By: /s/ Merryl E. Werber  
Merryl E. Werber  
Senior Vice President,  
Chief Accounting Officer and Controller

[\(Back To Top\)](#)

## Section 2: EX-99.1 (EXHIBIT 99.1)

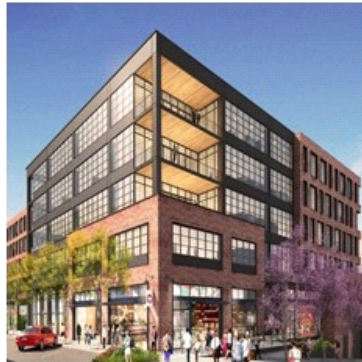
Exhibit 99.1



## Q3 2019 Supplemental Financial Report



333 Dexter  
(South Lake Union, Seattle)



2100 Kettner  
(Little Italy, San Diego)



Kilroy Oyster Point – Phase I  
(South San Francisco)



On Vine Mixed-Use Project  
(Los Angeles)

# Kilroy Realty Corporation

## Third Quarter 2019 Supplemental Financial Report

### Table of Contents

	Page
<b>Corporate Data and Financial Highlights</b>	
Company Background	1
Executive Summary	2
Financial Highlights	3
Net Income Available to Common Stockholders / FFO Guidance and Outlook	4
Common Stock Data	5
Consolidated Balance Sheets	6
Consolidated Statements of Operations	7
Funds From Operations and Funds Available for Distribution	8-9
Net Operating Income	10
<b>Portfolio Data</b>	
Same Store Analysis	11
Stabilized Portfolio Occupancy Overview by Region	12-16
Information on Leases Commenced & Leases Executed	17
Stabilized Portfolio Capital Expenditures	18
Stabilized Portfolio Lease Expirations	19-21
Top Fifteen Tenants	22
2019 Dispositions and Real Estate Held for Sale	23
Consolidated Ventures (Noncontrolling Property Partnerships)	24
<b>Development</b>	
Stabilized Office Development Projects & Completed Residential Development Projects	25
In-Process Development	26
Future Development Pipeline	27
<b>Debt and Capitalization Data</b>	
Capital Structure	28
Debt Analysis	29-30
<b>Non-GAAP Supplemental Measures</b>	31-33
<b>Definitions &amp; Reconciliations</b>	34-37

*This Supplemental Financial Report contains "forward-looking statements" within the meaning of Section 27A of the Securities Act of 1933, as amended, and Section 21E of the Securities Exchange Act of 1934, as amended. These statements include, among other things, information concerning lease expirations, debt maturities, potential investments, development and redevelopment activity, projected construction costs, dispositions and other forward-looking financial data. In some instances, forward-looking statements can be identified by the use of forward-looking terminology such as "expect," "future," "will," "would," "pursue," or "project" and variations of such words and similar expressions that do not relate to historical matters. Forward-looking statements are based on Kilroy Realty Corporation's current expectations, beliefs and assumptions, and are not guarantees of future performance. Forward-looking statements are inherently subject to uncertainties, risks, changes in circumstances, trends and factors that are difficult to predict, many of which are outside of Kilroy Realty Corporation's control. Accordingly, actual performance, results and events may vary materially from those indicated or implied in the forward-looking statements, and you should not rely on the forward-looking statements as predictions of future performance, results or events. Numerous factors could cause actual future performance, results and events to differ materially from those indicated in the forward-looking statements, including, among others: global market and general economic conditions and their effect on our liquidity and financial conditions and those of our tenants; adverse economic or real estate conditions generally, and specifically, in the States of California and Washington; risks associated with our investment in real estate assets, which are illiquid, and with trends in the real estate industry; defaults on or non-renewal of leases by tenants; any significant downturn in tenants' businesses; our ability to re-lease property at or above current market rates; costs to comply with government regulations, including environmental remediation; the availability of cash for distribution and debt service and exposure to risk of default under debt obligations; increases in interest rates and our ability to manage interest rate exposure; the availability of financing on attractive terms or at all, which may adversely impact our future interest expense and our ability to pursue development, redevelopment and acquisition opportunities and refinance existing debt; a decline in real estate asset valuations, which may limit our ability to dispose of assets at attractive prices or obtain or maintain debt financing, and which may result in write-offs or impairment charges; significant competition, which may decrease the occupancy and rental rates of properties; potential losses that may not be covered by insurance; the ability to successfully complete acquisitions and dispositions on announced terms; the ability to successfully operate acquired, developed and redeveloped properties; the ability to successfully complete development and redevelopment projects on schedule and within budgeted amounts; delays or refusals in obtaining all necessary zoning, land use and other required entitlements, governmental permits and authorizations for our development and redevelopment properties; increases in anticipated capital expenditures, tenant improvement and/or leasing costs; defaults on leases for land on which some of our properties are located; adverse changes to, or enactment or implementations of, tax laws or other applicable laws, regulations or legislation, as well as business and consumer reactions to such changes; risks associated with joint venture investments, including our lack of sole decision-making authority, our reliance on co-venturers' financial condition and disputes between us and our co-venturers; environmental uncertainties and risks related to natural disasters; and our ability to maintain our status as a REIT. These factors are not exhaustive and additional factors could adversely affect our business and financial performance. For a discussion of additional factors that could materially adversely affect Kilroy Realty Corporation's business and financial performance, see the factors included under the caption "Risk Factors" in Kilroy Realty Corporation's annual report on Form 10-K for the year ended December 31, 2018, and its other filings with the Securities and Exchange Commission. All forward-looking statements are based on currently available information and speak only as of the dates on which they are made. Kilroy Realty Corporation assumes no obligation to update any forward-looking statement made in this Supplemental Financial Report that becomes untrue because of subsequent events, new information or otherwise, except to the extent we are required to do so in connection with our ongoing requirements under federal securities laws.*

# Kilroy Realty Corporation

## Third Quarter 2019 Supplemental Financial Report

### Company Background

Kilroy Realty Corporation (*NYSE: KRC*), a publicly traded real estate investment trust and member of the S&P MidCap 400 Index, is one of the West Coast's premier landlords. The Company has over 70 years of experience developing, acquiring and managing office and mixed-use real estate assets. At September 30, 2019, the Company's stabilized portfolio totaled approximately 13.3 million square feet of office space that was 92.1% occupied, located in the coastal regions of Los Angeles, San Diego, the San Francisco Bay Area and Greater Seattle and 200 residential units located in the Hollywood submarket of Los Angeles.

Board of Directors	Executive Management Team	Investor Relations
John Kilroy <i>Chairman</i>	John Kilroy <i>President and CEO</i>	12200 W. Olympic Blvd., Suite 200
Edward F. Brennan, PhD <i>Lead Independent</i>	Jeffrey C. Hawken <i>Executive VP and COO</i>	Los Angeles, CA 90064
Jolie Hunt	Robert Paratte <i>Executive VP, Leasing and Business Development</i>	(310) 481-8400
Scott S. Ingraham	Tyler H. Rose <i>Executive VP and CFO</i>	Web: <a href="http://www.kilroyrealty.com">www.kilroyrealty.com</a>
Gary R. Stevenson	Heidi R. Roth <i>Executive VP and Chief Administrative Officer</i>	E-mail: <a href="mailto:investorrelations@kilroyrealty.com">investorrelations@kilroyrealty.com</a>
Peter B. Stoneberg	Justin W. Smart <i>Executive VP, Development and Construction Services</i>	

### Equity Research Coverage

<b>Bank of America Merrill Lynch</b>		<b>J.P. Morgan</b>	
James Feldman	(646) 855-5808	Anthony Paolone	(212) 622-6682
<b>BMO Capital Markets Corp.</b>		<b>KeyBanc Capital Markets</b>	
John P. Kim	(212) 885-4115	Craig Mailman	(917) 368-2316
<b>BTIG</b>		<b>RBC Capital Markets</b>	
Thomas Catherwood	(212) 738-6140	Mike Carroll	(440) 715-2649
<b>Citigroup Investment Research</b>		<b>Robert W. Baird &amp; Co.</b>	
Michael Bilerman	(212) 816-1383	David B. Rodgers	(216) 737-7341
<b>Deutsche Bank Securities, Inc.</b>		<b>Scotiabank</b>	
Derek Johnston	(210) 250-5683	Nicholas Yulico	(212) 225-6904
<b>Evercore ISI</b>		<b>Stifel, Nicolaus &amp; Company</b>	
Steve Sakwa	(212) 446-9462	John W. Guinee III	(443) 224-1307
<b>Green Street Advisors</b>		<b>Wells Fargo</b>	
Daniel Ismail	(949) 640-8780	Blaine Heck	(443) 263-6529

*Kilroy Realty Corporation is followed by the analysts listed above. Please note that any opinions, estimates or forecasts regarding Kilroy Realty Corporation's performance made by these analysts are theirs alone and do not represent opinions, forecasts or predictions of Kilroy Realty Corporation or its management. Kilroy Realty Corporation does not by its reference above or distribution imply its endorsement of or concurrence with such information, conclusions or recommendations.*

# Kilroy Realty Corporation

## Third Quarter 2019 Supplemental Financial Report

### Executive Summary

#### Quarterly Financial Highlights

- Net income available to common stockholders per share of \$0.41
- FFO per share of \$1.01
- Revenues of \$215.5 million
- Same Store GAAP NOI increased 8.3% compared to the prior year
- Same Store Cash NOI increased 3.6% compared to the prior year

#### Quarterly Operating Highlights

- Stabilized portfolio was 92.1% occupied and 97.3% leased at quarter-end
- 444,308 square feet of leases commenced in the stabilized portfolio
- 484,330 square feet of leases executed in the stabilized portfolio
  - GAAP rents increased approximately 38.8% from prior levels
  - Cash rents increased approximately 17.6% from prior levels

#### Capital Markets Highlights

- In September, completed a public offering of \$500.0 million of 10-year senior unsecured notes at 3.050% due February 2030
- As of the date of this report, no outstanding borrowings on our unsecured revolving credit facility and approximately \$85.0 million of unrestricted and restricted cash on hand

#### Strategic Highlights

- In August, completed the acquisition of a 2.3-acre land site in the East Village submarket of San Diego for a cash purchase price of \$40.0 million. The site is fully entitled for the development of a mixed-use project. Currently, there are three existing buildings that are leased by the prior owner through the first half of 2021
- In September, completed construction on 237 residential units, the first of three phases of the residential development at our One Paseo mixed-use project in the Del Mar submarket of San Diego. Phase I is currently 33% leased
- In September, commenced construction on 2100 Kettner, a 200,000 square foot office project in the Little Italy submarket of downtown San Diego. The project has a total estimated investment of \$140.0 million

*Note: Definitions for commonly used terms in this Supplemental Financial Report are on pages 34-35 "Definitions Included in Supplemental."*

# Kilroy Realty Corporation

## Third Quarter 2019 Supplemental Financial Report

### Financial Highlights

(unaudited, \$ in thousands, except per share amounts)

	Three Months Ended				
	9/30/2019 <sup>(1)</sup>	6/30/2019 <sup>(1)(2)</sup>	3/31/2019 <sup>(1)</sup>	12/31/2018 <sup>(2)</sup>	9/30/2018
<b>INCOME ITEMS:</b>					
Revenues	\$ 215,525	\$ 200,492	\$ 201,202	\$ 190,842	\$ 186,562
Lease Termination Fees, net	—	1,824	1,888	1,293	431
Net Operating Income <sup>(3)</sup>	152,170	141,916	142,442	137,636	131,020
Capitalized Interest and Debt Costs	20,585	20,880	19,437	19,519	19,156
Net Income Available to Common Stockholders	43,846	42,194	36,903	160,220	34,400
EBITDA, as adjusted <sup>(5)(4)</sup>	129,163	120,025	119,172	113,883	112,085
Funds From Operations <sup>(4)(5)(6)(7)</sup>	109,243	99,905	99,812	81,330	94,247
Net Income Available to Common Stockholders per common share – diluted <sup>(6)</sup>	\$ 0.41	\$ 0.41	\$ 0.36	\$ 1.58	\$ 0.33
Funds From Operations per common share – diluted <sup>(4)(6)(7)</sup>	\$ 1.01	\$ 0.95	\$ 0.95	\$ 0.78	\$ 0.90
<b>LIQUIDITY ITEMS:</b>					
Funds Available for Distribution <sup>(5)(6)(8)</sup>	\$ 65,078	\$ 52,369	\$ 65,934	\$ 51,792	\$ 68,758
Dividends per common share <sup>(6)</sup>	\$ 0.485	\$ 0.485	\$ 0.455	\$ 0.455	\$ 0.455
<b>RATIOS:</b>					
Net Operating Income Margins	70.6%	70.8%	70.8%	72.1%	70.2%
Fixed Charge Coverage Ratio	4.2x	3.9x	4.0x	3.7x	3.8x
FFO Payout Ratio <sup>(4)(7)</sup>	48.0%	50.0%	46.9%	57.5%	49.6%
FAD Payout Ratio <sup>(8)</sup>	80.5%	95.4%	71.1%	90.3%	68.0%
<b>ASSETS:</b>					
Real Estate Held for Investment before Depreciation	\$ 8,977,843	\$ 8,824,558	\$ 8,616,167	\$ 8,426,632	\$ 8,329,580
Total Assets	8,623,815	8,094,721	7,883,987	7,765,707	7,562,236
<b>CAPITALIZATION: <sup>(9)</sup></b>					
Total Debt	\$ 3,334,967	\$ 3,210,427	\$ 3,020,882	\$ 2,955,811	\$ 2,891,725
Total Common Equity and Noncontrolling Interests in the Operating Partnership	8,414,862	7,602,085	7,823,144	6,462,321	7,367,745
Total Market Capitalization	11,749,829	10,812,512	10,844,026	9,418,132	10,259,470
Total Debt / Total Market Capitalization	28.4%	29.7%	27.9%	31.4%	28.2%

Note: Definitions for commonly used terms in this Supplemental Financial Report are on pages 34-35 "Definitions Included in Supplemental."

- (1) The Company adopted ASC 842 "Leases" effective January 1, 2019. Please refer to page 10 for a description of the impact of the adoption on our consolidated statements of operations.
- (2) Net Income Available to Common Stockholders includes \$7.2 million of gains on sale of depreciable operating properties for the three months ended June 30, 2019 and \$142.9 million of gains on sales of depreciable operating properties, an \$11.8 million gain on sale of land and a \$12.6 million loss on early extinguishment of debt for the three months ended December 31, 2018.
- (3) Please refer to page 10 for the calculation of Net Operating Income and pages 36-37 for reconciliations of GAAP Net Income Available to Common Stockholders to Net Operating Income and EBITDA, as adjusted.
- (4) EBITDA, as adjusted, and Funds From Operations include a \$11.8 million gain on sale of land for the three months ended December 31, 2018. The Company's calculation of EBITDA, as adjusted, is the same as EBITDA, as defined by NAREIT, as the Company does not have any unconsolidated joint ventures.
- (5) Please refer to page 8 for reconciliations of GAAP Net Income Available to Common Stockholders to Funds From Operations available to common stockholders and unitholders and Funds Available for Distribution to common stockholders and unitholders and page 9 for a reconciliation of GAAP Net Cash Provided by Operating Activities to Funds Available for Distribution to common stockholders and unitholders.
- (6) Reported amounts are attributable to common stockholders, common unitholders and restricted stock unit holders.
- (7) Funds From Operations for the three months ended December 31, 2018 includes a \$12.6 million loss on early extinguishment of debt.
- (8) Funds Available for Distribution for the three months ended December 31, 2018 includes a \$11.8 million cash loss on early extinguishment of debt.
- (9) Please refer to page 28 for additional information regarding our capital structure.

# Kilroy Realty Corporation

## Third Quarter 2019 Supplemental Financial Report

### Net Income Available to Common Stockholders / FFO Guidance and Outlook (unaudited, \$ and shares/units in thousands, except per share amounts)

The Company is providing an updated guidance range of NAREIT-defined FFO per diluted share for its fiscal year 2019 of \$3.82 to \$3.88 per share with a midpoint of \$3.85 per share.

	Full Year 2019 Range	
	Low End	High End
<b>Net income available to common stockholders per share - diluted</b>	\$ 1.59	\$ 1.65
<b>Weighted average common shares outstanding - diluted (1)</b>	105,500	105,500
<b>Net income available to common stockholders</b>	\$ 168,000	\$ 174,000
Adjustments:		
Net income attributable to noncontrolling common units of the Operating Partnership	3,300	3,500
Net income attributable to noncontrolling interests in consolidated property partnerships	16,500	19,500
Depreciation and amortization of real estate assets	256,000	256,000
Gains on sales of depreciable real estate	(7,169)	(7,169)
Funds From Operations attributable to noncontrolling interests in consolidated property partnerships	(26,000)	(29,000)
<b>Funds From Operations (2)</b>	<u>\$ 410,631</u>	<u>\$ 416,831</u>
<b>Weighted average common shares and units outstanding - diluted (3)</b>	107,500	107,500
<b>FFO per common share/unit - diluted (3)</b>	<u>\$ 3.82</u>	<u>\$ 3.88</u>

Key 2019 assumptions include:

- Flat same store cash net operating income (2)
- Year-end occupancy of 94.0% to 95.0%
- Total remaining development spending of approximately \$125.0 million to \$150.0 million

(1) Calculated based on estimated weighted average shares outstanding including non-participating share-based awards.

(2) See pages 32-33 for Management Statements on Funds From Operations and Same Store Cash Net Operating Income.

(3) Calculated based on weighted average shares outstanding including participating and non-participating share-based awards, dilutive impact of stock options, contingently issuable shares, and shares issuable under forward equity sale agreements and assuming the exchange of all common limited partnership units outstanding. Reported amounts are attributable to common stockholders, common unitholders and restricted stock unitholders.

The Company's guidance estimates for the full year 2019, and the reconciliation of net income available to common stockholders per share - diluted and FFO per share and unit - diluted included within this report, reflect management's views on current and future market conditions, including assumptions with respect to rental rates, occupancy levels, and the earnings impact of the events referenced in this report. Although these guidance estimates reflect the impact on the Company's operating results of an assumed range of future disposition activity, these guidance estimates do not include any estimates of possible future gains or losses from possible future dispositions because the magnitude of gains or losses on sales of depreciable operating properties, if any, will depend on the sales price and depreciated cost basis of the disposed assets at the time of disposition, information that is not known at the time the Company provides guidance, and the timing of any gain recognition will depend on the closing of the dispositions, information that is also not known at the time the Company provides guidance and may occur after the relevant guidance period. We caution you not to place undue reliance on our assumed range of future disposition activity because any potential future disposition transactions will ultimately depend on the market conditions and other factors, including but not limited to the Company's capital needs, the particular assets being sold and the Company's ability to defer some or all of the taxable gain on the sales. These guidance estimates also do not include the impact on operating results from potential future acquisitions, possible capital markets activity, possible future impairment charges or any events outside of the Company's control. There can be no assurance that the Company's actual results will not differ materially from these estimates.



# Kilroy Realty Corporation

## Third Quarter 2019 Supplemental Financial Report

### Common Stock Data (NYSE: KRC)

	Three Months Ended				
	9/30/2019	6/30/2019	3/31/2019	12/31/2018	9/30/2018
High Price	\$ 80.06	\$ 78.36	\$ 76.50	\$ 72.34	\$ 76.67
Low Price	\$ 74.25	\$ 72.87	\$ 61.44	\$ 59.46	\$ 69.67
Closing Price	\$ 77.89	\$ 73.81	\$ 75.96	\$ 62.88	\$ 71.69
Dividends per share – annualized	\$ 1.94	\$ 1.94	\$ 1.82	\$ 1.82	\$ 1.82
Closing common shares (in 000's) <sup>(1)(2)</sup>	106,012	100,972	100,967	100,747	100,747
Closing common partnership units (in 000's) <sup>(1)</sup>	2,023	2,023	2,023	2,025	2,025
	<u>108,035</u>	<u>102,995</u>	<u>102,990</u>	<u>102,772</u>	<u>102,772</u>

(1) As of the end of the period.

(2) In July 2019, the Company fully and physically settled 5,000,000 shares of common stock in connection with the August 2018 forward transaction for net proceeds of approximately \$354.3 million.

# Kilroy Realty Corporation

## Third Quarter 2019 Supplemental Financial Report

### Consolidated Balance Sheets

(unaudited, \$ in thousands)

	9/30/2019	6/30/2019	3/31/2019	12/31/2018	9/30/2018
<b>ASSETS:</b>					
Land and improvements	\$ 1,315,448	\$ 1,284,582	\$ 1,184,496	\$ 1,160,138	\$ 1,127,100
Buildings and improvements	5,770,226	5,712,448	5,300,313	5,207,984	5,056,050
Undeveloped land and construction in progress	1,892,169	1,827,528	2,131,358	2,058,510	2,146,430
Total real estate assets held for investment	8,977,843	8,824,558	8,616,167	8,426,632	8,329,580
Accumulated depreciation and amortization	(1,505,785)	(1,480,766)	(1,441,506)	(1,391,368)	(1,411,529)
Total real estate assets held for investment, net	7,472,058	7,343,792	7,174,661	7,035,264	6,918,051
Real estate assets and other assets held for sale, net	77,751	—	—	—	—
Cash and cash equivalents	297,620	52,415	49,693	51,604	86,517
Restricted cash	6,300	6,300	6,300	119,430	—
Marketable securities	26,188	25,203	24,098	21,779	23,353
Current receivables, net	34,116	27,563	28,016	20,176	17,519
Deferred rent receivables, net	314,812	297,358	280,756	267,007	261,003
Deferred leasing costs and acquisition-related intangible assets, net	202,063	203,451	187,309	197,574	183,118
Right of use ground lease assets	83,200	82,647	82,794	—	—
Prepaid expenses and other assets, net	109,707	55,992	50,360	52,873	72,675
<b>TOTAL ASSETS</b>	<b>\$ 8,623,815</b>	<b>\$ 8,094,721</b>	<b>\$ 7,883,987</b>	<b>\$ 7,765,707</b>	<b>\$ 7,562,236</b>
<b>LIABILITIES AND EQUITY:</b>					
<i>Liabilities:</i>					
Secured debt, net	\$ 259,027	\$ 259,455	\$ 259,878	\$ 335,531	\$ 336,866
Unsecured debt, net	3,048,209	2,553,651	2,552,883	2,552,070	2,207,049
Unsecured line of credit	—	375,000	185,000	45,000	330,000
Accounts payable, accrued expenses and other liabilities	439,081	385,567	373,691	374,415	360,674
Ground lease liabilities	87,617	87,082	87,247	—	—
Accrued dividends and distributions	53,205	50,800	47,676	47,559	47,411
Deferred revenue and acquisition-related intangible liabilities, net	134,828	136,266	138,973	149,646	149,059
Rents received in advance and tenant security deposits	57,428	59,997	55,457	60,225	56,258
Liabilities and deferred revenue of real estate assets held for sale	4,911	—	—	—	—
Total liabilities	4,084,306	3,907,818	3,700,805	3,564,446	3,487,317
<i>Equity:</i>					
<i>Stockholders' Equity</i>					
Common stock	1,060	1,010	1,010	1,007	1,007
Additional paid-in capital	4,342,296	3,984,867	3,976,204	3,976,953	3,965,405
Distributions in excess of earnings	(78,707)	(70,345)	(62,690)	(48,053)	(161,654)
Total stockholders' equity	4,264,649	3,915,532	3,914,524	3,929,907	3,804,758
<i>Noncontrolling Interests</i>					
Common units of the Operating Partnership	81,393	78,463	78,413	78,991	76,486
Noncontrolling interests in consolidated property partnerships	193,467	192,908	190,245	192,363	193,675
Total noncontrolling interests	274,860	271,371	268,658	271,354	270,161
Total equity	4,539,509	4,186,903	4,183,182	4,201,261	4,074,919
<b>TOTAL LIABILITIES AND EQUITY</b>	<b>\$ 8,623,815</b>	<b>\$ 8,094,721</b>	<b>\$ 7,883,987</b>	<b>\$ 7,765,707</b>	<b>\$ 7,562,236</b>

# Kilroy Realty Corporation

## Third Quarter 2019 Supplemental Financial Report

### Consolidated Statements of Operations

*(unaudited, \$ and shares in thousands, except per share amounts)*

	Three Months Ended September 30,		Nine Months Ended September 30,	
	2019	2018	2019	2018
<b>REVENUES</b>				
Rental income <sup>(1)</sup>	\$ 212,321	\$ 162,288	\$ 609,332	\$ 489,674
Tenant reimbursements <sup>(1)</sup>	—	21,754	—	60,471
Other property income <sup>(1)</sup>	3,204	2,520	7,887	6,311
Total revenues	<u>215,525</u>	<u>186,562</u>	<u>617,219</u>	<u>556,456</u>
<b>EXPENSES</b>				
Property expenses <sup>(1)</sup>	41,308	35,163	117,993	99,401
Real estate taxes <sup>(1)</sup>	19,998	17,462	56,563	52,421
Provision for bad debts <sup>(1)</sup>	—	1,338	—	6,714
Ground leases <sup>(1)</sup>	2,049	1,579	6,135	4,726
General and administrative expenses	22,576	19,277	65,774	56,599
Leasing costs <sup>(1)</sup>	1,192	—	5,599	—
Depreciation and amortization	69,230	62,700	203,617	189,421
Total expenses	<u>156,353</u>	<u>137,519</u>	<u>455,681</u>	<u>409,282</u>
<b>OTHER (EXPENSES) INCOME</b>				
Interest income and other net investment gain	761	342	3,205	1,147
Interest expense	(11,635)	(11,075)	(34,605)	(37,285)
Gains on sales of depreciable operating properties	—	—	7,169	—
Total other (expenses) income	<u>(10,874)</u>	<u>(10,733)</u>	<u>(24,231)</u>	<u>(36,138)</u>
<b>NET INCOME</b>				
Total income	<u>48,298</u>	<u>38,310</u>	<u>137,307</u>	<u>111,036</u>
Net income attributable to noncontrolling common units of the Operating Partnership	(852)	(691)	(2,423)	(2,008)
Net income attributable to noncontrolling interests in consolidated property partnerships	(3,600)	(3,219)	(11,941)	(10,833)
Total income attributable to noncontrolling interests	<u>(4,452)</u>	<u>(3,910)</u>	<u>(14,364)</u>	<u>(12,841)</u>
<b>NET INCOME AVAILABLE TO COMMON STOCKHOLDERS</b>				
Total income	<u>\$ 43,846</u>	<u>\$ 34,400</u>	<u>\$ 122,943</u>	<u>\$ 98,195</u>
Weighted average common shares outstanding – basic	104,841	100,677	102,253	99,711
Weighted average common shares outstanding – diluted	105,360	101,228	102,872	100,209
<b>NET INCOME AVAILABLE TO COMMON STOCKHOLDERS PER SHARE</b>				
Net income available to common stockholders per share – basic	<u>\$ 0.41</u>	<u>\$ 0.34</u>	<u>\$ 1.19</u>	<u>\$ 0.97</u>
Net income available to common stockholders per share – diluted	<u>\$ 0.41</u>	<u>\$ 0.33</u>	<u>\$ 1.18</u>	<u>\$ 0.97</u>

(1) Effective January 1, 2019, the Company adopted ASC 842 "Leases." Please refer to page 10 for a description of the changes made to our 2019 consolidated statement of operations upon adoption of ASC 842 "Leases." In accordance with the adoption of the new standard under the modified retrospective method, previously reported periods are not restated for the impact of the standard.

# Kilroy Realty Corporation

## Third Quarter 2019 Supplemental Financial Report

### Funds From Operations and Funds Available for Distribution (unaudited, \$ in thousands, except per share amounts)

	Three Months Ended September 30,		Nine Months Ended September 30,	
	2019	2018	2019	2018
<b>FUNDS FROM OPERATIONS: <sup>(1)</sup></b>				
Net income available to common stockholders	\$ 43,846	\$ 34,400	\$ 122,943	\$ 98,195
Adjustments:				
Net income attributable to noncontrolling common units of the Operating Partnership	852	691	2,423	2,008
Net income attributable to noncontrolling interests in consolidated property partnerships	3,600	3,219	11,941	10,833
Depreciation and amortization of real estate assets	67,985	61,609	199,967	186,242
Gains on sales of depreciable real estate	—	—	(7,169)	—
Funds From Operations attributable to noncontrolling interests in consolidated property partnerships	(7,040)	(5,672)	(21,145)	(18,117)
Funds From Operations <sup>(1)(2)</sup>	<u>\$ 109,243</u>	<u>\$ 94,247</u>	<u>\$ 308,960</u>	<u>\$ 279,161</u>
Weighted average common shares/units outstanding – basic <sup>(3)</sup>	107,981	103,841	105,400	102,923
Weighted average common shares/units outstanding – diluted <sup>(4)</sup>	108,500	104,393	106,020	103,421
FFO per common share/unit – basic <sup>(1)</sup>	<u>\$ 1.01</u>	<u>\$ 0.91</u>	<u>\$ 2.93</u>	<u>\$ 2.71</u>
FFO per common share/unit – diluted <sup>(1)</sup>	<u>\$ 1.01</u>	<u>\$ 0.90</u>	<u>\$ 2.91</u>	<u>\$ 2.70</u>
<b>FUNDS AVAILABLE FOR DISTRIBUTION: <sup>(1)</sup></b>				
Funds From Operations <sup>(1)(2)</sup>	\$ 109,243	\$ 94,247	\$ 308,960	\$ 279,161
Adjustments:				
Recurring tenant improvements, leasing commissions and capital expenditures	(31,438)	(26,218)	(86,454)	(75,066)
Amortization of deferred revenue related to tenant-funded tenant improvements <sup>(2)(5)</sup>	(6,766)	(4,811)	(14,947)	(13,680)
Net effect of straight-line rents	(18,743)	(4,445)	(52,201)	(14,612)
Amortization of net below market rents <sup>(6)</sup>	(1,826)	(2,166)	(6,241)	(7,647)
Amortization of deferred financing costs and net debt discount/premium	194	234	911	816
Non-cash executive compensation expense <sup>(7)</sup>	6,495	6,634	21,323	18,901
Other lease related adjustments, net and leasing costs <sup>(8)</sup>	3,991	3,447	2,148	4,001
Adjustments attributable to noncontrolling interests in consolidated property partnerships	3,928	1,836	9,882	4,374
Funds Available for Distribution <sup>(1)</sup>	<u>\$ 65,078</u>	<u>\$ 68,758</u>	<u>\$ 183,381</u>	<u>\$ 196,248</u>

(1) See page 33 for Management Statements on Funds From Operations and Funds Available for Distribution. Reported per common share/unit amounts are attributable to common stockholders, common unitholders and restricted stock unit holders.

(2) FFO available to common stockholders and unitholders includes amortization of deferred revenue related to tenant-funded tenant improvements of \$6.8 million and \$4.8 million for the three months ended September 30, 2019 and 2018, respectively, and \$14.9 million and \$13.7 million for the nine months ended September 30, 2019 and 2018, respectively. These amounts are adjusted out of FFO in our calculation of FAD.

(3) Calculated based on weighted average shares outstanding including participating share-based awards and assuming the exchange of all common limited partnership units outstanding.

(4) Calculated based on weighted average shares outstanding including participating and non-participating share-based awards, dilutive impact of stock options, contingently issuable shares, and shares issuable under forward equity sale agreements and assuming the exchange of all common limited partnership units outstanding.

(5) Represents revenue recognized during the period as a result of the amortization of deferred revenue recorded for tenant-funded tenant improvements.

(6) Represents the non-cash adjustment related to the acquisition of buildings with above and/or below market rents.

(7) Includes non-cash amortization of share-based compensation and accrued potential future executive retirement benefits.

(8) Includes other cash and non-cash adjustments attributable to lease-related matters including GAAP revenue recognition timing differences and leasing costs.

# Kilroy Realty Corporation

## Third Quarter 2019 Supplemental Financial Report

### Reconciliation of GAAP Net Cash Provided by Operating Activities to Funds Available for Distribution (unaudited, \$ in thousands)

	Three Months Ended September 30,		Nine Months Ended September 30,	
	2019	2018	2019	2018
<b>GAAP Net Cash Provided by Operating Activities</b>	\$ 135,730	\$ 128,372	\$ 301,390	\$ 317,215
Adjustments:				
Recurring tenant improvements, leasing commissions and capital expenditures	(31,438)	(26,218)	(86,454)	(75,066)
Depreciation of non-real estate furniture, fixtures and equipment	(1,245)	(1,091)	(3,650)	(3,179)
Net changes in operating assets and liabilities <sup>(1)</sup>	(34,254)	(25,576)	(15,251)	(20,089)
Noncontrolling interests in consolidated property partnerships' share of FFO and FAD	(3,112)	(3,836)	(11,263)	(13,743)
Cash adjustments related to investing and financing activities	(603)	(2,893)	(1,391)	(8,890)
<b>Funds Available for Distribution <sup>(2)</sup></b>	<b>\$ 65,078</b>	<b>\$ 68,758</b>	<b>\$ 183,381</b>	<b>\$ 196,248</b>

(1) Primarily includes changes in the following assets and liabilities: marketable securities; current receivables; prepaid expenses and other assets; accounts payable, accrued expenses and other liabilities; and rents received in advance and tenant security deposits.

(2) Please refer to page 33 for a Management Statement on Funds Available for Distribution.

# Kilroy Realty Corporation

## Third Quarter 2019 Supplemental Financial Report

### Net Operating Income <sup>(1)</sup> (unaudited, \$ in thousands)

	Three Months Ended September 30,				Nine Months Ended September 30,			
	2019 <sup>(2)</sup>	2018 As Reported	2018 As Adjusted <sup>(3)</sup>	% Change 2019 vs. 2018 As Adjusted	2019 <sup>(2)</sup>	2018 As Reported	2018 As Adjusted <sup>(3)</sup>	% Change 2019 vs. 2018 As Adjusted
<b>Operating Revenues:</b>								
Rental income	\$ 181,959	\$ 162,288	\$ 161,098	12.9%	\$ 526,906	\$ 489,674	\$ 482,024	9.3%
Tenant reimbursements	30,362	21,754	26,107	16.3%	82,426	60,471	72,144	14.3%
Other property income	3,204	2,520	2,372	35.1%	7,887	6,311	7,247	8.8%
Total operating revenues	215,525	186,562	189,577	13.7%	617,219	556,456	561,415	9.9%
<b>Operating Expenses:</b>								
Property expenses	41,308	35,163	39,516	4.5%	117,993	99,401	111,074	6.2%
Real estate taxes	19,998	17,462	16,992	17.7%	56,563	52,421	51,028	10.8%
Provision for bad debts	—	1,338	—	—%	—	6,714	—	—%
Ground leases	2,049	1,579	2,049	—%	6,135	4,726	6,119	0.3%
Total operating expenses	63,355	55,542	58,557	8.2%	180,691	163,262	168,221	7.4%
<b>Net Operating Income</b>	<b>\$ 152,170</b>	<b>\$ 131,020</b>	<b>\$ 131,020</b>	<b>16.1%</b>	<b>\$ 436,528</b>	<b>\$ 393,194</b>	<b>\$ 393,194</b>	<b>11.0%</b>

(1) Please refer to page 31 for Management Statements on Net Operating Income and page 36 for a reconciliation of GAAP Net Income Available to Common Stockholders to Net Operating Income.

(2) Effective January 1, 2019, the Company adopted ASC 842 "Leases," which required the following changes for all periods beginning and subsequent to January 1, 2019. In accordance with the adoption of the new standard under the modified retrospective method, previously reported periods are not restated for the impact of the standard.

- All lease related revenue required to be reported as a single component within rental income. For the three months ended September 30, 2019, rental income includes \$30.4 million of tenant reimbursements and \$3.6 million of gross lease termination fees. For the nine months ended September 30, 2019, rental income includes \$82.4 million of tenant reimbursements and \$10.5 million of gross lease termination fees. For this analysis, tenant reimbursements have been broken out from rental income for comparison purposes.

- Rental income to be presented net of provision for bad debts. For the three and nine months ended September 30, 2019, rental income includes provision for bad debts of \$0.1 million and a recovery of provision for bad debts of \$3.2 million, respectively.

- All property expenses paid directly by the Company and reimbursed by the tenant to be presented on a gross basis. For the three and nine months ended September 30, 2019, rental income and property expenses both include \$4.1 million and \$10.1 million, respectively, of additional tenant reimbursements and the related property expenses, which were previously shown net in property expenses in prior periods. This change has no impact to net income, Net Operating Income or Funds From Operations.

- Non-tenant parking income to be presented in other property income instead of rental income since recognized under ASC 606 "Revenue from Contracts with Customers" and outside the scope of ASC 842 "Leases."

- Real estate taxes for properties where the Company is a lessee under ground leases to be presented in ground leases instead of real estate taxes. For the three and nine months ended September 30, 2019, ground leases includes \$0.5 million and \$1.4 million, respectively, of property taxes for properties where the Company is a lessee.

(3) The components of Net Operating Income for the three and nine months ended September 30, 2018 have been presented as if we adopted ASC 842 "Leases" effective January 1, 2018 for comparison purposes. For this analysis, tenant reimbursements have been broken out from rental income for comparison purposes. For the three and nine months ended September 30, 2018 as adjusted, rental income includes \$1.9 million and \$4.4 million, respectively, of lease termination fees.

# Kilroy Realty Corporation

## Third Quarter 2019 Supplemental Financial Report

### Same Store Analysis <sup>(1)</sup> (unaudited, \$ in thousands)

	Three Months Ended September 30,				Nine Months Ended September 30,			
	2019	2018	2018 As Adjusted <small>(2)</small>	% Change 2019 vs. 2018 As Adjusted	2019	2018	2018 As Adjusted <small>(2)</small>	% Change 2019 vs. 2018 As Adjusted
<b>Total Same Store Portfolio</b>								
<i>Office Portfolio</i>								
Number of properties	88	88	88		88	88	88	
Square Feet	12,672,292	12,672,292	12,672,292		12,672,292	12,672,292	12,672,292	
Percent of Stabilized Portfolio	95.1%	91.2%	91.2%		95.1%	91.2%	91.2%	
Average Occupancy	94.0%	93.0%	93.0%		93.7%	94.3%	94.3%	
<b>Operating Revenues: <sup>(3)</sup></b>								
Rental income	\$ 160,055	\$ 151,352	\$ 150,049	6.7%	\$ 473,884	\$ 458,013	\$ 450,526	5.2%
Tenant reimbursements	24,559	19,655	23,643	3.9%	70,416	54,751	65,386	7.7%
Other property income	2,705	2,397	2,247	20.4%	6,707	6,078	7,015	(4.4)%
Total operating revenues	<u>187,319</u>	<u>173,404</u>	<u>175,939</u>	6.5%	<u>551,007</u>	<u>518,842</u>	<u>522,927</u>	5.4%
<b>Operating Expenses: <sup>(3)</sup></b>								
Property expenses	36,750	32,386	36,374	1.0%	107,765	91,806	102,441	5.2%
Real estate taxes	16,309	15,874	15,403	5.9%	48,950	47,745	46,352	5.6%
Provision for bad debts	—	1,452	—	—%	—	6,550	—	—%
Ground leases	2,049	1,579	2,049	—%	6,135	4,726	6,119	0.3%
Total operating expenses	<u>55,108</u>	<u>51,291</u>	<u>53,826</u>	2.4%	<u>162,850</u>	<u>150,827</u>	<u>154,912</u>	5.1%
<b>GAAP Net Operating Income</b>	<u>\$ 132,211</u>	<u>\$ 122,113</u>	<u>\$ 122,113</u>	8.3%	<u>\$ 388,157</u>	<u>\$ 368,015</u>	<u>\$ 368,015</u>	5.5%

<b>Same Store Analysis (Cash Basis) <sup>(4)</sup></b>								
	Three Months Ended September 30,				Nine Months Ended September 30,			
	2019	2018	2018 As Adjusted <small>(2)</small>	% Change 2019 vs. 2018 As Adjusted	2019	2018	2018 As Adjusted <small>(2)</small>	% Change 2019 vs. 2018 As Adjusted
Total operating revenues	\$ 170,993	\$ 161,743	\$ 165,731	3.2%	\$ 495,839	\$ 484,935	\$ 495,570	0.1%
Total operating expenses	55,105	49,837	53,825	2.4%	162,879	144,275	154,910	5.1%
<b>Cash Net Operating Income</b>	<u>\$ 115,888</u>	<u>\$ 111,906</u>	<u>\$ 111,906</u>	3.6%	<u>\$ 332,960</u>	<u>\$ 340,660</u>	<u>\$ 340,660</u>	(2.3)%

(1) Same Store is defined as all properties owned and included in our stabilized portfolio as of January 1, 2018 and still owned and included in the stabilized portfolio as of September 30, 2019. Same Store includes 100% of consolidated property partnerships as well as the residential tower at Columbia Square.

(2) The components of Net Operating Income for the three and nine months ended September 30, 2018 have been presented as if we adopted ASC 842 "Leases" effective January 1, 2018 for comparison purposes.

(3) Please refer to page 10 for our Net Operating Income and a description of the changes made and their impact on our consolidated statements of operations effective January 1, 2019 upon adoption of ASC 842 "Leases." For this analysis, tenant reimbursements have been broken out from rental income. For the three and nine months ended September 30, 2019, rental income includes gross lease termination fees of \$2.0 million and \$5.2 million, respectively. For the three and nine months ended September 30, 2018 as adjusted, rental income includes lease termination fees of \$1.9 million and \$4.2 million, respectively. For our same store portfolio, the gross-up presentation of property expenses paid directly by the Company and reimbursed by the tenant increased tenant reimbursements and property expenses by \$3.6 million and \$9.0 million for the three and nine months ended September 30, 2019, respectively. The impact of all other changes from the adoption of ASC 842 was the same for our consolidated portfolio and our same store portfolio.

(4) Please refer to page 36 for a reconciliation of GAAP Net Income Available to Common Stockholders to Same Store GAAP Net Operating Income and Same Store Cash Net Operating Income.

# Kilroy Realty Corporation

## Third Quarter 2019 Supplemental Financial Report

### Stabilized Portfolio Occupancy Overview by Region

STABILIZED OFFICE PORTFOLIO	Buildings	Portfolio Breakdown			Occupied at		Leased at
		YTD NOI %	SF %	Total SF	9/30/2019	6/30/2019 <sup>(1)</sup>	9/30/2019
<i>Greater Los Angeles</i>							
El Segundo	5	5.1%	8.2%	1,093,050	98.0%	98.0%	98.0%
Hollywood	6	6.9%	6.2%	806,557	98.6%	97.5%	98.9%
Long Beach	7	3.1%	7.1%	949,942	93.3%	93.1%	93.3%
West Hollywood	4	1.6%	1.3%	178,699	92.2%	92.2%	98.3%
West Los Angeles	10	6.6%	6.3%	844,151	90.4%	90.6%	92.2%
<b>Total Greater Los Angeles</b>	<b>32</b>	<b>23.3%</b>	<b>29.1%</b>	<b>3,872,399</b>	<b>95.1%</b>	<b>94.8%</b>	<b>95.8%</b>
<i>San Diego County</i>							
Del Mar	14	7.9%	10.2%	1,352,289	93.4%	93.4%	96.7%
I-15 Corridor	5	1.3%	4.1%	540,892	80.8%	80.2%	81.3%
Point Loma	1	0.5%	0.8%	107,456	100.0%	100.0%	100.0%
University Towne Center	1	0.2%	0.4%	47,846	91.4%	91.4%	91.4%
<b>Total San Diego County</b>	<b>21</b>	<b>9.9%</b>	<b>15.5%</b>	<b>2,048,483</b>	<b>90.4%</b>	<b>90.2%</b>	<b>92.7%</b>
<i>San Francisco Bay Area</i>							
Menlo Park	7	3.5%	2.8%	378,358	100.0%	100.0%	100.0%
Mountain View	4	4.8%	4.1%	542,235	100.0%	100.0%	100.0%
Palo Alto	2	1.8%	1.2%	165,585	100.0%	100.0%	100.0%
Redwood City	2	4.0%	2.5%	347,269	100.0%	100.0%	100.0%
San Francisco	10	33.0%	25.2%	3,357,103	81.8%	90.8%	99.5%
South San Francisco	3	1.3%	1.1%	145,530	100.0%	100.0%	100.0%
Sunnyvale	4	5.4%	4.9%	663,460	100.0%	100.0%	100.0%
<b>Total San Francisco Bay Area</b>	<b>32</b>	<b>53.8%</b>	<b>41.8%</b>	<b>5,599,540</b>	<b>89.1%</b>	<b>94.5%</b>	<b>99.7%</b>
<i>Greater Seattle</i>							
Bellevue	2	6.2%	7.0%	917,027	97.1%	97.4%	97.8%
Lake Union	6	6.8%	6.6%	884,763	97.4%	97.8%	98.5%
<b>Total Greater Seattle</b>	<b>8</b>	<b>13.0%</b>	<b>13.6%</b>	<b>1,801,790</b>	<b>97.2%</b>	<b>97.6%</b>	<b>98.2%</b>
<b>TOTAL STABILIZED OFFICE PORTFOLIO</b>	<b>93</b>	<b>100.0%</b>	<b>100.0%</b>	<b>13,322,212</b>	<b>92.1%</b>	<b>93.8%</b>	<b>97.3%</b>
<b>STABILIZED RESIDENTIAL PROPERTY</b>							
		Submarket	Buildings	Total No. of Units	Average Residential Occupancy		
					Quarter-to-Date	Year-to-Date	
<i>Greater Los Angeles</i>							
1550 N. El Centro Avenue		Hollywood	1	200	87.8%	78.5%	

Average Office Occupancy	
Quarter-to-Date	Year-to-Date
93.2%	93.3%

(1) Represents occupancy for properties in the stabilized portfolio as of the date presented, including properties sold subsequent to the date presented.



**Kilroy Realty Corporation**  
**Third Quarter 2019 Supplemental Financial Report**

**Stabilized Office Portfolio Occupancy Overview by Region, continued**

	Submarket	Square Feet	Occupied
<b>Greater Los Angeles, California</b>			
2240 E. Imperial Highway	El Segundo	122,870	100.0%
2250 E. Imperial Highway	El Segundo	298,728	100.0%
2260 E. Imperial Highway	El Segundo	298,728	100.0%
909 N. Pacific Coast Highway	El Segundo	244,136	92.9%
999 N. Pacific Coast Highway	El Segundo	128,588	96.5%
1500 N. El Centro Avenue	Hollywood	104,504	100.0%
1525 N. Gower Street	Hollywood	9,610	100.0%
1575 N. Gower Street	Hollywood	251,245	100.0%
6115 W. Sunset Boulevard	Hollywood	26,105	100.0%
6121 W. Sunset Boulevard	Hollywood	91,173	100.0%
6255 W. Sunset Boulevard	Hollywood	323,920	96.6%
3750 Kilroy Airport Way	Long Beach	10,457	100.0%
3760 Kilroy Airport Way	Long Beach	165,278	92.5%
3780 Kilroy Airport Way	Long Beach	219,777	81.6%
3800 Kilroy Airport Way	Long Beach	192,476	100.0%
3840 Kilroy Airport Way	Long Beach	136,026	100.0%
3880 Kilroy Airport Way	Long Beach	96,035	100.0%
3900 Kilroy Airport Way	Long Beach	129,893	91.4%
8560 W. Sunset Boulevard	West Hollywood	71,875	100.0%
8570 W. Sunset Boulevard	West Hollywood	43,603	85.1%
8580 W. Sunset Boulevard	West Hollywood	7,126	100.0%
8590 W. Sunset Boulevard	West Hollywood	56,095	86.8%
12100 W. Olympic Boulevard	West Los Angeles	152,048	87.8%
12200 W. Olympic Boulevard	West Los Angeles	150,832	89.5%
12233 W. Olympic Boulevard	West Los Angeles	151,029	96.2%
12312 W. Olympic Boulevard	West Los Angeles	76,644	100.0%
1633 26th Street	West Los Angeles	43,857	34.9%
2100/2110 Colorado Avenue	West Los Angeles	102,864	100.0%
3130 Wilshire Boulevard	West Los Angeles	90,074	92.3%
501 Santa Monica Boulevard	West Los Angeles	76,803	93.4%
<b>Total Greater Los Angeles</b>		<b>3,872,399</b>	<b>95.1%</b>

**Kilroy Realty Corporation**  
**Third Quarter 2019 Supplemental Financial Report**

**Stabilized Office Portfolio Occupancy Overview by Region, continued**

	Submarket	Square Feet	Occupied
<b>San Diego, California</b>			
12225 El Camino Real	Del Mar	58,401	100.0%
12235 El Camino Real	Del Mar	53,751	88.9%
12340 El Camino Real	Del Mar	89,272	50.1%
12390 El Camino Real	Del Mar	70,140	44.9%
12348 High Bluff Drive	Del Mar	38,806	100.0%
12770 El Camino Real	Del Mar	73,032	100.0%
12780 El Camino Real	Del Mar	140,591	100.0%
12790 El Camino Real	Del Mar	78,836	100.0%
12400 High Bluff Drive	Del Mar	209,220	100.0%
3579 Valley Centre Drive	Del Mar	54,960	100.0%
3611 Valley Centre Drive	Del Mar	129,656	100.0%
3661 Valley Centre Drive	Del Mar	128,364	100.0%
3721 Valley Centre Drive	Del Mar	115,193	100.0%
3811 Valley Centre Drive	Del Mar	112,067	100.0%
13280 Evening Creek Drive South	I-15 Corridor	41,196	100.0%
13290 Evening Creek Drive South	I-15 Corridor	61,180	100.0%
13480 Evening Creek Drive North	I-15 Corridor	154,157	100.0%
13500 Evening Creek Drive North	I-15 Corridor	137,658	41.3%
13520 Evening Creek Drive North	I-15 Corridor	146,701	84.4%
2305 Historic Decatur Road	Point Loma	107,456	100.0%
4690 Executive Drive	University Towne Center	47,846	91.4%
<b>Total San Diego County</b>		<b>2,048,483</b>	<b>90.4%</b>

**Kilroy Realty Corporation**  
**Third Quarter 2019 Supplemental Financial Report**

**Stabilized Office Portfolio Occupancy Overview by Region, continued**

	Submarket	Square Feet	Occupied
<b>San Francisco Bay Area, California</b>			
4100 Bohannon Drive	Menlo Park	47,379	100.0%
4200 Bohannon Drive	Menlo Park	45,451	100.0%
4300 Bohannon Drive	Menlo Park	63,079	100.0%
4400 Bohannon Drive	Menlo Park	48,146	100.0%
4500 Bohannon Drive	Menlo Park	63,078	100.0%
4600 Bohannon Drive	Menlo Park	48,147	100.0%
4700 Bohannon Drive	Menlo Park	63,078	100.0%
1290-1300 Terra Bella Avenue	Mountain View	114,175	100.0%
331 Fairchild Drive	Mountain View	87,147	100.0%
680 E. Middlefield Road	Mountain View	170,090	100.0%
690 E. Middlefield Road	Mountain View	170,823	100.0%
1701 Page Mill Road	Palo Alto	128,688	100.0%
3150 Porter Drive	Palo Alto	36,897	100.0%
900 Jefferson Avenue	Redwood City	228,505	100.0%
900 Middlefield Road	Redwood City	118,764	100.0%
100 Hooper Street	San Francisco	394,340	87.6%
100 First Street	San Francisco	467,095	97.5%
303 Second Street	San Francisco	784,658	67.8%
201 Third Street	San Francisco	346,538	99.2%
360 Third Street	San Francisco	429,796	100.0%
250 Brannan Street	San Francisco	100,850	100.0%
301 Brannan Street	San Francisco	82,834	100.0%
333 Brannan Street	San Francisco	185,602	1.9%
345 Brannan Street	San Francisco	110,050	0.0%
350 Mission Street	San Francisco	455,340	99.7%
345 Oyster Point Boulevard	South San Francisco	40,410	100.0%
347 Oyster Point Boulevard	South San Francisco	39,780	100.0%
349 Oyster Point Boulevard	South San Francisco	65,340	100.0%
505 Mathilda Avenue	Sunnyvale	212,322	100.0%
555 Mathilda Avenue	Sunnyvale	212,322	100.0%
605 Mathilda Avenue	Sunnyvale	162,785	100.0%
599 Mathilda Avenue	Sunnyvale	76,031	100.0%
<b>Total San Francisco Bay Area</b>		<b>5,599,540</b>	<b>89.1%</b>

**Kilroy Realty Corporation**  
**Third Quarter 2019 Supplemental Financial Report**

**Stabilized Office Portfolio Occupancy Overview by Region, continued**

	Submarket	Square Feet	Occupied
<b>Greater Seattle, Washington</b>			
601 108th Avenue NE	Bellevue	488,470	96.8%
10900 NE 4th Street	Bellevue	428,557	97.4%
837 N. 34th Street	Lake Union	112,487	83.0%
701 N. 34th Street	Lake Union	141,860	97.5%
801 N. 34th Street	Lake Union	169,412	100.0%
320 Westlake Avenue North	Lake Union	184,644	100.0%
321 Terry Avenue North	Lake Union	135,755	100.0%
401 Terry Avenue North	Lake Union	140,605	100.0%
<b>Total Greater Seattle</b>		<b>1,801,790</b>	<b>97.2%</b>
<b>TOTAL</b>		<b>13,322,212</b>	<b>92.1%</b>

# Kilroy Realty Corporation

## Third Quarter 2019 Supplemental Financial Report

### Information on Leases Commenced <sup>(1)</sup>

	1st & 2nd Generation					2nd Generation				Weighted Average Lease Term (Mo.)
	# of Leases <sup>(2)</sup>		Square Feet <sup>(2)</sup>		Retention Rates	TI/LC Per Sq.Ft. <sup>(3)</sup>	TI/LC Per Sq.Ft./Year <sup>(3)</sup>	Changes in GAAP Rents	Changes in Cash Rents	
	New	Renewal	New	Renewal						
Quarter to Date	15	17	218,096	226,212	31.7%	\$ 28.14	\$ 4.76	49.9%	18.9%	71
Year to Date	50	47	879,855	796,690	37.9%	44.98	6.43	44.0%	17.7%	84

### Information on Leases Executed <sup>(1)</sup>

	1st & 2nd Generation				2nd Generation				Weighted Average Lease Term (Mo.)
	# of Leases <sup>(4)</sup>		Square Feet <sup>(4)</sup>		TI/LC Per Sq.Ft. <sup>(3)</sup>	TI/LC Per Sq.Ft./Year <sup>(3)</sup>	Changes in GAAP Rents	Changes in Cash Rents	
	New	Renewal	New	Renewal					
Quarter to Date <sup>(5)</sup>	13	17	258,118	226,212	\$ 55.02	\$ 8.46	38.8%	17.6%	78
Year to Date <sup>(6)</sup>	50	47	790,427	795,637	59.30	8.57	55.3%	31.6%	83

(1) Includes 100% of consolidated property partnerships.

(2) Represents leasing activity for leases that commenced at properties in the stabilized portfolio during the three and nine months ended September 30, 2019, including first and second generation space, net of month-to-month leases.

(3) Includes tenant improvement costs and third-party leasing commissions. Amounts exclude tenant-funded tenant improvements and indirect leasing costs required to be expensed under ASC 842 "Leases" effective January 1, 2019.

(4) Represents leasing activity for leases signed at properties in the stabilized portfolio during the three and nine months ended September 30, 2019, including first and second generation space, net of month-to-month leases. Excludes leasing on new construction.

(5) During the three months ended September 30, 2019, 12 new leases totaling 255,429 square feet were signed but not commenced as of September 30, 2019.

(6) During the nine months ended September 30, 2019, 29 new leases totaling 649,255 square feet were signed but not commenced as of September 30, 2019.

# Kilroy Realty Corporation

## Third Quarter 2019 Supplemental Financial Report

### Stabilized Portfolio Capital Expenditures (*\$ in thousands*)

	Total 2019	Q3 2019	Q2 2019	Q1 2019
<b>1st Generation (Nonrecurring) Capital Expenditures:</b> <sup>(1)</sup>				
Capital Improvements	\$ 8,180	\$ 1,366	\$ 5,047	\$ 1,767
Tenant Improvements & Leasing Commissions <sup>(2)</sup>	7,892	2,592	1,303	3,997
<b>Total</b>	<b>\$ 16,072</b>	<b>\$ 3,958</b>	<b>\$ 6,350</b>	<b>\$ 5,764</b>

	Total 2019	Q3 2019	Q2 2019	Q1 2019
<b>2nd Generation (Recurring) Capital Expenditures:</b> <sup>(1)</sup>				
Capital Improvements	\$ 10,975	\$ 4,526	\$ 2,447	\$ 4,002
Tenant Improvements & Leasing Commissions <sup>(2)</sup>	75,479	26,912	30,986	17,581
<b>Total</b>	<b>\$ 86,454</b>	<b>\$ 31,438</b>	<b>\$ 33,433</b>	<b>\$ 21,583</b>

(1) Includes 100% of capital expenditures of consolidated property partnerships.

(2) Includes tenant improvement costs and third-party leasing commissions. Amounts exclude tenant-funded tenant improvements.

# Kilroy Realty Corporation

## Third Quarter 2019 Supplemental Financial Report

### Stabilized Portfolio Lease Expiration Summary Schedule

(\$ in thousands, except for annualized rent per sq. ft.)

Year of Expiration	# of Expiring Leases	Total Square Feet	% of Total Leased Sq. Ft.	Annualized Base Rent (1)	% of Total Annualized Base Rent	Annualized Rent per Sq. Ft.
Remaining 2019 <sup>(2)</sup>	16	191,125	1.6%	\$ 9,566	1.6%	\$ 50.05
2020 <sup>(2)</sup>	86	987,588	8.2%	43,559	7.3%	44.11
2021	80	859,799	7.1%	36,649	6.1%	42.63
2022	53	665,181	5.6%	28,747	4.8%	43.22
2023	68	1,182,699	9.8%	62,853	10.5%	53.14
2024	54	1,009,069	8.4%	47,980	8.0%	47.55
2025	37	581,177	4.8%	27,944	4.7%	48.08
2026	27	1,457,612	12.1%	64,216	10.8%	44.06
2027	22	1,173,612	9.7%	46,801	7.8%	39.88
2028	20	914,973	7.6%	57,265	9.6%	62.59
2029 and beyond	36	3,020,085	25.1%	171,777	28.8%	56.88
Total <sup>(3)</sup>	499	12,042,920	100.0%	\$ 597,357	100.0%	\$ 49.60

(1) Includes 100% of annualized base rent of consolidated property partnerships.

(2) Adjusting for leasing transactions executed as of September 30, 2019 but not yet commenced, the 2019 and 2020 expirations would be reduced by 127,213 and 213,238 square feet, respectively.

(3) For leases that have been renewed early with existing tenants, the expiration date and annualized base rent information presented takes into consideration the renewed lease terms. Excludes leases not commenced as of September 30, 2019, space leased under month-to-month leases, storage leases, vacant space and future lease renewal options not executed as of September 30, 2019.

# Kilroy Realty Corporation

## Third Quarter 2019 Supplemental Financial Report

### Stabilized Portfolio Lease Expiration Schedule by Region (*\$ in thousands, except for annualized rent per sq. ft.*)

Year	Region	# of Expiring Leases	Total Square Feet	% of Total Leased Sq. Ft.	Annualized Base Rent <sup>(1)</sup>	% of Total Annualized Base Rent	Annualized Rent per Sq. Ft.
2019	Greater Los Angeles	5	16,614	0.2%	\$ 705	0.1%	\$ 42.43
	San Diego	2	26,359	0.2%	1,045	0.2%	39.64
	San Francisco Bay Area	7	143,605	1.2%	7,720	1.3%	53.76
	Greater Seattle	2	4,547	—%	96	—%	21.11
	Total	16	191,125	1.6%	\$ 9,566	1.6%	\$ 50.05
2020	Greater Los Angeles	53	457,905	3.8%	\$ 19,273	3.2%	\$ 42.09
	San Diego	15	199,864	1.7%	8,063	1.4%	40.34
	San Francisco Bay Area	14	241,096	2.0%	13,662	2.3%	56.67
	Greater Seattle	4	88,723	0.7%	2,561	0.4%	28.87
	Total	86	987,588	8.2%	\$ 43,559	7.3%	\$ 44.11
2021	Greater Los Angeles	45	287,380	2.4%	\$ 11,615	1.9%	\$ 40.42
	San Diego	16	304,848	2.5%	11,888	2.0%	39.00
	San Francisco Bay Area	11	239,259	2.0%	12,245	2.0%	51.18
	Greater Seattle	8	28,312	0.2%	901	0.2%	31.82
	Total	80	859,799	7.1%	\$ 36,649	6.1%	\$ 42.63
2022	Greater Los Angeles	34	281,628	2.3%	\$ 12,824	2.2%	\$ 45.54
	San Diego	7	198,982	1.7%	6,819	1.1%	34.27
	San Francisco Bay Area	6	115,111	1.0%	6,551	1.1%	56.91
	Greater Seattle	6	69,460	0.6%	2,553	0.4%	36.75
	Total	53	665,181	5.6%	\$ 28,747	4.8%	\$ 43.22
2023	Greater Los Angeles	32	317,854	2.7%	\$ 16,924	2.8%	\$ 53.24
	San Diego	11	191,750	1.6%	8,002	1.3%	41.73
	San Francisco Bay Area	20	583,769	4.8%	34,870	5.9%	59.73
	Greater Seattle	5	89,326	0.7%	3,057	0.5%	34.22
	Total	68	1,182,699	9.8%	\$ 62,853	10.5%	\$ 53.14
2024 and Beyond	Greater Los Angeles	71	2,171,110	18.0%	\$ 93,906	15.8%	\$ 43.25
	San Diego	31	901,006	7.5%	42,772	7.2%	47.47
	San Francisco Bay Area	58	3,622,129	30.1%	220,663	36.9%	60.92
	Greater Seattle	36	1,462,283	12.1%	58,642	9.8%	40.10
	Total	196	8,156,528	67.7%	\$ 415,983	69.7%	\$ 51.00

(1) Includes 100% of annualized base rent of consolidated property partnerships.



**Kilroy Realty Corporation**  
**Third Quarter 2019 Supplemental Financial Report**

**Stabilized Portfolio Quarterly Lease Expirations for 2019 and 2020**  
*(\$ in thousands, except for annualized rent per sq. ft.)*

	# of Expiring Leases	Total Square Feet	% of Total Leased Sq. Ft.	Annualized Base Rent <sup>(1)</sup>	% of Total Annualized Base Rent	Annualized Rent per Sq. Ft.
<b>2019:</b>						
Q4 2019	16	191,125	1.6%	\$ 9,566	1.6%	\$ 50.05
Total 2019 <sup>(2)</sup>	16	191,125	1.6%	\$ 9,566	1.6%	\$ 50.05
<b>2020:</b>						
Q1 2020	26	289,761	2.4%	\$ 12,974	2.2%	\$ 44.77
Q2 2020	17	167,083	1.4%	7,541	1.3%	45.13
Q3 2020	20	176,803	1.5%	6,124	1.0%	34.64
Q4 2020	23	353,941	2.9%	16,920	2.8%	47.80
Total 2020 <sup>(2)</sup>	86	987,588	8.2%	\$ 43,559	7.3%	\$ 44.11

(1) Includes 100% of annualized base rent of consolidated property partnerships.

(2) Adjusting for leasing transactions executed as of September 30, 2019 but not yet commenced, the 2019 and 2020 expirations would be reduced by 127,213 and 213,238 square feet, respectively.

# Kilroy Realty Corporation

## Third Quarter 2019 Supplemental Financial Report

### Top Fifteen Tenants<sup>(1)</sup> (*\$ in thousands*)

Tenant Name	Region	Annualized Base Rental Revenue <sup>(2)</sup>	Rentable Square Feet	Percentage of Total Annualized Base Rental Revenue	Percentage of Total Rentable Square Feet
LinkedIn Corporation / Microsoft Corporation	San Francisco Bay Area	\$ 29,752	663,460	4.9%	5.0%
Dropbox, Inc. <sup>(3)</sup>	San Francisco Bay Area	29,088	393,091	4.8%	3.0%
Adobe Systems Inc.	San Francisco Bay Area / Greater Seattle	27,897	513,111	4.6%	3.9%
salesforce.com, inc.	San Francisco Bay Area	24,076	451,763	4.0%	3.4%
DIRECTV, LLC	Greater Los Angeles	23,152	684,411	3.8%	5.1%
Box, Inc.	San Francisco Bay Area	22,441	371,792	3.7%	2.8%
Okta, Inc.	San Francisco Bay Area	17,122	207,066	2.8%	1.6%
Riot Games, Inc.	Greater Los Angeles	15,514	251,509	2.6%	1.9%
Synopsys, Inc.	San Francisco Bay Area	15,492	340,913	2.6%	2.6%
Viacom International, Inc.	Greater Los Angeles	13,718	211,343	2.3%	1.6%
Amazon.com	Greater Seattle	12,492	277,399	2.1%	2.1%
Nektar Therapeutics, Inc.	San Francisco Bay Area	12,297	135,350	2.0%	1.0%
Concur Technologies	Greater Seattle	10,643	288,322	1.8%	2.2%
Splunk, Inc.	San Francisco Bay Area	10,323	100,850	1.7%	0.8%
Cisco Systems, Inc.	San Francisco Bay Area	9,830	144,306	1.6%	1.1%
<b>Total Top Fifteen Tenants</b>		<b>\$ 273,837</b>	<b>5,034,686</b>	<b>45.3%</b>	<b>38.1%</b>

(1) The information presented is as of September 30, 2019.

(2) Includes 100% of annualized base rental revenues of consolidated property partnerships.

(3) During the nine months ended September 30, 2019, the Company completed construction and commenced revenue recognition on its lease with Dropbox, Inc. for the first phase of The Exchange on 16th, which represents approximately 52% of the 750,000 square foot development project located in San Francisco's Mission Bay district. As revenue recognition commences on the remaining phases, Dropbox, Inc. will become the Company's largest tenant based on the Company's current tenant base.

# Kilroy Realty Corporation

## Third Quarter 2019 Supplemental Financial Report

### 2019 Dispositions and Real Estate Held for Sale

(\$ in millions)

COMPLETED OPERATING PROPERTY DISPOSITIONS					
Property	Submarket	Month of Disposition	No. of Buildings	Rentable Square Feet	Sales Price <sup>(1)</sup>
<b>1st Quarter</b>					
None					
<b>2nd Quarter</b>					
2829 Townsgate Road, Thousand Oaks, CA	101 Corridor	May	1	84,098	\$ 18.3
<b>3rd Quarter</b>					
None					
<b>TOTAL DISPOSITIONS</b>			1	84,098	\$ 18.3

OPERATING PROPERTIES HELD FOR SALE AS OF SEPTEMBER 30, 2019					
Property	Submarket	No. of Buildings	Rentable Square Feet	Sales Price <sup>(1)</sup>	
2211 Michelson Drive, Irvine, CA	Orange County	1	271,556	\$	115.5

(1) Represents gross sales price before the impact of commissions and closing costs.

# Kilroy Realty Corporation

## Third Quarter 2019 Supplemental Financial Report

### Consolidated Ventures (Noncontrolling Property Partnerships)

Property <sup>(1)</sup>	Venture Partner	Submarket	Rentable Square Feet	KRC Ownership %
100 First Street, San Francisco, CA	Norges Bank Real Estate Management	San Francisco	467,095	56%
303 Second Street, San Francisco, CA	Norges Bank Real Estate Management	San Francisco	784,658	56%
900 Jefferson Avenue and 900 Middlefield Road, Redwood City, CA <sup>(2)</sup>	Local developer	Redwood City	347,269	93%

(1) For breakout of Net Operating Income by partnership, refer to page 36, Reconciliation of Net Income Available to Common Stockholders to Same Store Net Operating Income.

(2) Reflects the KRC ownership percentage at time of agreement. Actual percentage may vary depending on cash flows or promote structure.

# Kilroy Realty Corporation

## Third Quarter 2019 Supplemental Financial Report

### Stabilized Office Development Projects and Completed Residential Development Projects (*\$ in millions*)

<u>STABILIZED OFFICE DEVELOPMENT PROJECTS</u>	<u>Location</u>	<u>Start Date</u>	<u>Completion Date</u>	<u>Total Estimated Investment</u>	<u>Rentable Square Feet</u>	<u>Office % Occupied</u>
<b><u>1st Quarter</u></b>						
None						
<b><u>2nd Quarter</u></b>						
100 Hooper <sup>(1)</sup>	San Francisco	4Q 2016	2Q 2018	\$ 275.0	394,340	100%
<b><u>3rd Quarter</u></b>						
None						
<b>TOTAL:</b>				<u>\$ 275.0</u>	<u>394,340</u>	<u>100%</u>

<u>COMPLETED RESIDENTIAL DEVELOPMENT PROJECTS</u>	<u>Location</u>	<u>Start Date</u>	<u>Completion Date</u>	<u>Total Estimated Investment</u>	<u>Number of Units</u>	<u>% Leased</u>
<b><u>1st Quarter</u></b>						
None						
<b><u>2nd Quarter</u></b>						
None						
<b><u>3rd Quarter</u></b>						
One Paseo - Residential Phase I <sup>(2)</sup>	Del Mar	4Q 2016	3Q 2019	\$ 145.0	237	33%
<b>TOTAL:</b>				<u>\$ 145.0</u>	<u>237</u>	<u>33%</u>

(1) The project is comprised of 311,859 square feet of office and 82,481 square feet of PDR space. The office component is 100% occupied by Adobe and the PDR component is 86% leased and 41% occupied.

(2) Phase I of the project was completed mid-September 2019.

# Kilroy Realty Corporation

## Third Quarter 2019 Supplemental Financial Report

### In-Process Development (\$ in millions)

<b>TENANT IMPROVEMENT <sup>(1)</sup></b>	Location	Construction Start Date	Estimated Stabilization Date <sup>(2)</sup>	Estimated Rentable Square Feet	Total Estimated Investment	Total Cash Costs Incurred as of 9/30/2019 <sup>(3)</sup>	Total Project % Leased	Total Project % Occupied
<i>Office</i>								
<b>San Francisco Bay Area</b>								
The Exchange on 16th <sup>(4)</sup>	San Francisco	2Q 2015	3Q 2020	750,000	\$ 585.0	\$ 516.4	99%	52%
<i>Mixed-Use</i>								
<b>San Diego County</b>								
One Paseo - Retail	Del Mar	4Q 2016	1Q 2020	96,000	100.0	93.6	100%	81%
<b>TOTAL:</b>				<b>846,000</b>	<b>\$ 685.0</b>	<b>\$ 610.0</b>	<b>99%</b>	<b>56%</b>

<b>UNDER CONSTRUCTION</b>	Location	Construction Start Date	Estimated Stabilization Date <sup>(2)</sup>	Estimated Rentable Square Feet	Total Estimated Investment	Total Cash Costs Incurred as of 9/30/2019 <sup>(3)</sup>	Office % Leased
<i>Office / Life Science</i>							
<b>San Francisco Bay Area</b>							
Kilroy Oyster Point - Phase I	South San Francisco	1Q 2019	3Q 2022	660,000	\$ 600.0	\$ 120.6	36%
<b>San Diego County</b>							
9455 Towne Centre Drive	University Towne Center	1Q 2019	2Q 2021	160,000	125.0	34.6	—%
<b>Greater Seattle</b>							
333 Dexter	South Lake Union	2Q 2017	3Q 2022	635,000	410.0	257.1	100%
<i>Mixed-Use</i>							
<b>Greater Los Angeles</b>							
Netflix // On Vine - Office	Hollywood	1Q 2018	1Q 2021	355,000	300.0	167.7	100%
Living // On Vine - Residential	Hollywood	4Q 2018	4Q 2020	193 Resi Units	195.0	93.3	N/A
<b>San Diego County</b>							
2100 Kettner	Little Italy	3Q 2019	1Q 2022	200,000	140.0	28.3	—%
One Paseo - Residential Phases II and III <sup>(5)</sup>	Del Mar	4Q 2016	3Q 2020	371 Resi Units	230.0	204.6	N/A
One Paseo - Office	Del Mar	4Q 2018	2Q 2021	285,000	205.0	140.0	76%
<b>TOTAL:</b>					<b>\$ 2,205.0</b>	<b>\$ 1,046.2</b>	<b>63%</b>

(1) Represents projects that have reached cold shell condition and are ready for tenant improvements, which may require additional major base building construction before being placed in service.

(2) For office and retail, represents the earlier of anticipated 95% occupancy date or one year from substantial completion of base building components. For multi-phase projects, interest and carry cost capitalization may cease and recommence driven by various factors, including tenant improvement construction and other tenant related timing or project scope.

(3) Represents costs incurred as of September 30, 2019, excluding accrued liabilities recorded in accordance with GAAP. Upon adoption of ASC 842 "Leases" effective January 1, 2019, also excludes leasing overhead.

(4) The Company has an executed 15-year lease for 100% of the office space with Dropbox, Inc., which commenced in phases beginning in the fourth quarter of 2018 through the fourth quarter of 2019. In the latter half of the second quarter of 2019, the Company delivered and commenced revenue recognition on Phase I of The Exchange on 16th, representing approximately 52% of the 750,000 square foot development project located in San Francisco's Mission Bay district. The estimated stabilization dates for Phase II and Phase III are the first quarter of 2020 and the third quarter of 2020, respectively.

(5) Phase I of the project, comprised of 237 units, was completed mid-September 2019.

# Kilroy Realty Corporation

## Third Quarter 2019 Supplemental Financial Report

### Future Development Pipeline (*\$ in millions*)

<b>FUTURE DEVELOPMENT PIPELINE</b>	<b>Location</b>	<b>Approx. Developable Square Feet <sup>(1)</sup></b>	<b>Total Cash Costs Incurred as of 9/30/2019 <sup>(2)</sup></b>
<b><u>San Diego County</u></b>			
Santa Fe Summit – Phases II and III	56 Corridor	600,000 - 650,000	\$ 78.2
1335 Broadway & 901 Park Boulevard	East Village	TBD	44.4
<b><u>San Francisco Bay Area</u></b>			
Kilroy Oyster Point - Phases II - IV	South San Francisco	1,750,000 - 1,900,000	304.8
Flower Mart <sup>(3)</sup>	SOMA	2,300,000	246.5
<b>TOTAL:</b>			<b>\$ 673.9</b>

(1) The developable square feet and scope of projects could change materially from estimated data provided due to one or more of the following: any significant changes in the economy, market conditions, our markets, tenant requirements and demands, construction costs, new supply, regulatory and entitlement processes or project design.

(2) Represents costs incurred as of September 30, 2019, excluding accrued liabilities recorded in accordance with GAAP.

(3) In the third quarter of 2019, the San Francisco Planning Commission approved an initial office allocation of approximately 1.4 million square feet under Proposition M, as well as priority for a future phase allocation of approximately 350,000 square feet in 2021, with the remainder of the more than two million square feet of office space allocated after 2021. The Flower Mart Project's development agreement must still be approved by the San Francisco Board of Supervisors and signed by the Mayor. The Flower Mart is an approximately 2.3 million square foot mixed-use project located in Central SOMA.

# Kilroy Realty Corporation

## Third Quarter 2019 Supplemental Financial Report

### Capital Structure

*As of September 30, 2019*  
(\$ in thousands)

	Shares/Units September 30, 2019	Aggregate Principal Amount or \$ Value Equivalent	% of Total Market Capitalization
<b>DEBT:</b> <sup>(1)(2)</sup>			
Unsecured Term Loan Facility		\$ 150,000	1.3%
Unsecured Senior Notes due 2023		300,000	2.6%
Unsecured Senior Notes due 2024		425,000	3.6%
Unsecured Senior Notes due 2025		400,000	3.4%
Unsecured Senior Notes Series A & B due 2026		250,000	2.1%
Unsecured Senior Notes due 2028		400,000	3.4%
Unsecured Senior Notes due 2029		400,000	3.4%
Unsecured Senior Notes Series A & B due 2027 & 2029		250,000	2.1%
Unsecured Senior Notes due 2030		500,000	4.3%
Secured Debt		259,967	2.2%
Total Debt		\$ 3,334,967	28.4%
<b>EQUITY AND NONCONTROLLING INTEREST IN THE OPERATING PARTNERSHIP:</b> <sup>(3)</sup>			
Common limited partnership units outstanding <sup>(4)</sup>	2,023,287	\$ 157,594	1.3%
Shares of common stock outstanding <sup>(5)</sup>	106,011,916	8,257,268	70.3%
Total Equity and Noncontrolling Interests in the Operating Partnership		\$ 8,414,862	71.6%
<b>TOTAL MARKET CAPITALIZATION</b>		<b>\$ 11,749,829</b>	<b>100.0%</b>

(1) Represents the gross aggregate principal amount due at maturity before the effect of unamortized deferred financing costs and premiums and discounts.

(2) As of September 30, 2019, there was no outstanding balance on the unsecured revolving credit facility.

(3) Value based on closing share price of \$77.89 as of September 30, 2019.

(4) Includes common units of the Operating Partnership not owned by the Company; does not include noncontrolling interests in consolidated property partnerships.

(5) Shares of common stock outstanding exclude 1,201,204 shares of common stock sold under forward equity sale agreements under our ATM program that remained to be settled as of September 30, 2019.



# Kilroy Realty Corporation

## Third Quarter 2019 Supplemental Financial Report

### Debt Analysis As of September 30, 2019

TOTAL DEBT COMPOSITION			
	Percent of Total Debt	Weighted Average	
		Interest Rate	Years to Maturity
<b>Secured vs. Unsecured Debt</b>			
Unsecured Debt	92.2%	3.9%	7.3
Secured Debt	7.8%	3.9%	7.4
<b>Floating vs. Fixed-Rate Debt</b>			
Floating-Rate Debt	4.5%	3.1%	2.8
Fixed-Rate Debt	95.5%	3.9%	7.6
<b>Stated Interest Rate</b>		3.9%	7.3
<b>GAAP Effective Rate</b>		3.9%	
<b>GAAP Effective Rate Including Debt Issuance Costs</b>		4.1%	

KEY DEBT COVENANTS		
	Covenant	Actual Performance as of September 30, 2019
<b>Unsecured Credit and Term Loan Facility and Private Placement Notes (as defined in the Credit Agreements):</b>		
Total debt to total asset value	less than 60%	29%
Fixed charge coverage ratio	greater than 1.5x	3.3x
Unsecured debt ratio	greater than 1.67x	2.96x
Unencumbered asset pool debt service coverage	greater than 1.75x	3.99x
<b>Unsecured Senior Notes due 2023, 2024, 2025, 2028, 2029 and 2030 (as defined in the Indentures):</b>		
Total debt to total asset value	less than 60%	35%
Interest coverage	greater than 1.5x	10.9x
Secured debt to total asset value	less than 40%	3%
Unencumbered asset pool value to unsecured debt	greater than 150%	284%

# Kilroy Realty Corporation

## Third Quarter 2019 Supplemental Financial Report

### Debt Analysis (\$ in thousands)

DEBT MATURITY SCHEDULE									
Floating/ Fixed Rate	Stated Rate	Maturity Date	2019	2020	2021	2022	2023	After 2023	Total <sup>(1)</sup>
<b>Unsecured Debt <sup>(2)</sup>:</b>									
Floating	3.13%	7/31/2022				\$ 150,000			\$ 150,000
Fixed	3.80%	1/15/2023					300,000		300,000
Fixed	3.45%	12/15/2024						425,000	425,000
Fixed	4.38%	10/1/2025						400,000	400,000
Fixed	4.30%	7/18/2026						50,000	50,000
Fixed	4.35%	10/18/2026						200,000	200,000
Fixed	3.35%	2/17/2027						175,000	175,000
Fixed	4.75%	12/15/2028						400,000	400,000
Fixed	3.45%	2/17/2029						75,000	75,000
Fixed	4.25%	8/15/2029						400,000	400,000
Fixed	3.05%	2/15/2030						500,000	500,000
Total unsecured debt	3.86%		—	—	—	150,000	300,000	2,625,000	3,075,000
<b>Secured Debt:</b>									
Fixed	3.57%	12/1/2026	—	3,224	3,341	3,462	3,587	156,386	170,000
Fixed	4.48%	7/1/2027	465	1,913	2,001	2,092	2,188	81,308	89,967
Total secured debt	3.88%		465	5,137	5,342	5,554	5,775	237,694	259,967
<b>Total</b>	<b>3.87%</b>		<b>\$ 465</b>	<b>\$ 5,137</b>	<b>\$ 5,342</b>	<b>\$ 155,554</b>	<b>\$ 305,775</b>	<b>\$ 2,862,694</b>	<b>\$3,334,967</b>

(1) Represents the gross aggregate principal amount due at maturity before the effect of unamortized deferred financing costs and premiums and discounts.

(2) As of September 30, 2019, there was no outstanding balance on the unsecured revolving credit facility.

# Kilroy Realty Corporation

## Third Quarter 2019 Supplemental Financial Report

---

### Management Statements on Non-GAAP Supplemental Measures

Included in this section are management's statements regarding certain non-GAAP financial measures provided in this supplemental financial report and, with respect to Funds From Operations available to common stockholders and common unitholders ("FFO"), in the Company's earnings release on October 23, 2019 and the reasons why management believes that these measures provide useful information to investors about the Company's financial condition and results of operations.

#### **Net Operating Income:**

Management believes that Net Operating Income ("NOI") is a useful supplemental measure of the Company's operating performance. The Company defines NOI after the adoption of the new lease accounting standard ASC 842 as follows: consolidated operating revenues (rental income and other property income) less consolidated property and related expenses (property expenses, real estate taxes and ground leases). The Company defines NOI prior to the adoption of the new lease accounting standard ASC 842 as follows: consolidated operating revenues (rental income, tenant reimbursements and other property income) less consolidated property and related expenses (property expenses, real estate taxes, provision for bad debts and ground leases). Other real estate investment trusts ("REITs") may use different methodologies for calculating NOI, and accordingly, the Company's NOI may not be comparable to other REITs.

Because NOI excludes leasing costs, general and administrative expenses, interest expense, depreciation and amortization, other nonproperty income and losses, and gains and losses from property dispositions, it provides a performance measure that, when compared year over year, reflects the consolidated revenues and expenses directly associated with owning and operating commercial real estate and the impact to operations from trends in occupancy rates, rental rates, and operating costs, providing a perspective on operations not immediately apparent from net income. The Company uses NOI to evaluate its operating performance on a portfolio basis since NOI allows the Company to evaluate the impact that factors such as occupancy levels, lease structure, rental rates, and tenant base have on the Company's results, margins and returns. In addition, management believes that NOI provides useful information to the investment community about the Company's financial and operating performance when compared to other REITs since NOI is generally recognized as a standard measure of performance in the real estate industry.

However, NOI should not be viewed as an alternative measure of the Company's financial performance since it does not reflect general and administrative expenses, leasing costs, interest expense, depreciation and amortization costs, other nonproperty income and losses and the level of capital expenditures necessary to maintain the operating performance of the Company's properties, or trends in development and construction activities which are significant economic costs and activities that could materially impact the Company's results from operations.

#### **Same Store Net Operating Income:**

Management believes that Same Store NOI is a useful supplemental measure of the Company's operating performance. Same Store NOI represents the consolidated NOI for all of the properties that were owned and included in the Company's stabilized portfolio for two comparable reporting periods. Because Same Store NOI excludes the change in NOI from developed, redeveloped, acquired and disposed of and held for sale properties, it highlights operating trends such as occupancy levels, rental rates and operating costs on properties. Other REITs may use different methodologies for calculating Same Store NOI, and accordingly, the Company's Same Store NOI may not be comparable to other REITs.

However, Same Store NOI should not be viewed as an alternative measure of the Company's financial performance since it does not reflect the operations of the Company's entire portfolio, nor does it reflect the impact of general and administrative expenses, leasing costs, interest expense, depreciation and amortization costs, other nonproperty income and losses and the level of capital expenditures necessary to maintain the operating performance of the Company's properties, or trends in development and construction activities which are significant economic costs and activities that could materially impact the Company's results from operations.

# Kilroy Realty Corporation

## Third Quarter 2019 Supplemental Financial Report

---

### Management Statements on Non-GAAP Supplemental Measures, continued

#### Same Store Cash Net Operating Income:

Management believes that Same Store Cash NOI is a useful supplemental measure of the Company's operating performance. Same Store Cash NOI represents the consolidated NOI for all of the properties that were owned and included in the Company's stabilized portfolio for two comparable reporting periods, adjusted for the net effect of straight-line rents, amortization of deferred revenue related to tenant-funded tenant improvements, amortization of above and below market lease intangibles, and the provision for bad debts. Because Same Store Cash NOI excludes the change in NOI from developed, redeveloped, acquired and disposed of and held for sale properties, it highlights operating trends on a cash basis such as occupancy levels, rental rates and operating costs on properties. Other REITs may use different methodologies for calculating Same Store Cash NOI, and accordingly, our Same Store Cash NOI may not be comparable to other REITs.

However, Same Store Cash NOI should not be viewed as an alternative measure of the Company's financial performance since it does not reflect the operations of the Company's entire portfolio, nor does it reflect the impact of general and administrative expenses, acquisition-related expenses, interest expense, depreciation and amortization costs, other nonproperty income and losses, the level of capital expenditures and leasing costs necessary to maintain the operating performance of the Company's properties, or trends in development and construction activities which are significant economic costs and activities that could materially impact the Company's results from operations.

#### EBITDA, as adjusted:

Management believes that consolidated earnings before interest expense, depreciation and amortization, gain/loss on early extinguishment of debt, gains and losses on depreciable real estate, net income attributable to noncontrolling interests, preferred dividends and distributions, original issuance costs of redeemed preferred stock and preferred units, and impairment losses ("EBITDA, as adjusted") is a useful supplemental measure of the Company's operating performance. When considered with other GAAP measures and FFO, management believes EBITDA, as adjusted, gives the investment community a more complete understanding of the Company's consolidated operating results, including the impact of general and administrative expenses and acquisition-related expenses, before the impact of investing and financing transactions and facilitates comparisons with competitors. Management also believes it is appropriate to present EBITDA, as adjusted, as it is used in several of the Company's financial covenants for both its secured and unsecured debt. However, EBITDA, as adjusted, should not be viewed as an alternative measure of the Company's operating performance since it excludes financing costs as well as depreciation and amortization costs which are significant economic costs that could materially impact the Company's results of operations and liquidity. Other REITs may use different methodologies for calculating EBITDA, as adjusted, and, accordingly, the Company's EBITDA, as adjusted, may not be comparable to other REITs. The Company's calculation of EBITDA, as adjusted, is the same as EBITDAre, as defined by NAREIT, as the Company does not have any unconsolidated joint ventures.

# Kilroy Realty Corporation

## Third Quarter 2019 Supplemental Financial Report

---

### Management Statements on Non-GAAP Supplemental Measures, continued

#### **Funds From Operations:**

The Company calculates Funds From Operations available to common stockholders and common unitholders (“FFO”) in accordance with the 2018 Restated White Paper on FFO approved by the Board of Governors of NAREIT. The White Paper defines FFO as net income or loss calculated in accordance with GAAP, excluding extraordinary items, as defined by GAAP, gains and losses from sales of depreciable real estate and impairment write-downs associated with depreciable real estate, plus real estate-related depreciation and amortization (excluding amortization of deferred financing costs and depreciation of non-real estate assets) and after adjustment for unconsolidated partnerships and joint ventures. Our calculation of FFO includes the amortization of deferred revenue related to tenant-funded tenant improvements and excludes the depreciation of the related tenant improvement assets. We also add back net income attributable to noncontrolling common units of the Operating Partnership because we report FFO attributable to common stockholders and common unitholders.

Management believes that FFO is a useful supplemental measure of the Company’s operating performance. The exclusion from FFO of gains and losses from the sale of operating real estate assets allows investors and analysts to readily identify the operating results of the assets that form the core of the Company’s activity and assists in comparing those operating results between periods. Also, because FFO is generally recognized as the industry standard for reporting the operations of REITs, it facilitates comparisons of operating performance to other REITs. However, other REITs may use different methodologies to calculate FFO, and accordingly, the Company’s FFO may not be comparable to all other REITs.

Implicit in historical cost accounting for real estate assets in accordance with GAAP is the assumption that the value of real estate assets diminishes predictably over time. Since real estate values have historically risen or fallen with market conditions, many industry investors and analysts have considered presentations of operating results for real estate companies using historical cost accounting alone to be insufficient. Because FFO excludes depreciation and amortization of real estate assets, management believes that FFO along with the required GAAP presentations provides a more complete measurement of the Company’s performance relative to its competitors and a more appropriate basis on which to make decisions involving operating, financing and investing activities than the required GAAP presentations alone would provide.

However, FFO should not be viewed as an alternative measure of the Company’s operating performance since it does not reflect either depreciation and amortization costs or the level of capital expenditures and leasing costs necessary to maintain the operating performance of the Company’s properties, which are significant economic costs and could materially impact the Company’s results from operations.

#### **Funds Available for Distribution:**

Management believes that Funds Available for Distribution available to common stockholders and common unitholders (“FAD”) is a useful supplemental measure of the Company’s liquidity. The Company computes FAD by adding to FFO the non-cash amortization of deferred financing costs, debt discounts and premiums and share-based compensation awards, amortization of above (below) market rents for acquisition properties and non-cash executive compensation expense then subtracting recurring tenant improvements, leasing commissions and capital expenditures and eliminating the net effect of straight-line rents, amortization of deferred revenue related to tenant improvements, adjusting for other lease related items and after adjustment for amounts attributable to noncontrolling interests in consolidated property partnerships. FAD provides an additional perspective on the Company’s ability to fund cash needs and make distributions to stockholders by adjusting FFO for the impact of certain cash and non-cash items, as well as adjusting FFO for recurring capital expenditures and leasing costs. Management also believes that FAD provides useful information to the investment community about the Company’s financial position as compared to other REITs since FAD is a liquidity measure used by other REITs. However, other REITs may use different methodologies for calculating FAD and, accordingly, the Company’s FAD may not be comparable to other REITs.

# Kilroy Realty Corporation

## Third Quarter 2019 Supplemental Financial Report

---

### Definitions Included in Supplemental

#### **Annualized Base Rent:**

Includes the impact of straight-lining rent escalations and the amortization of free rent periods and excludes the impact of the following: amortization of deferred revenue related to tenant-funded tenant improvements, amortization of above/below market rents, amortization for lease incentives due under existing leases, and expense reimbursement revenue. Additionally, the underlying leases contain various expense structures including full service gross, modified gross and triple net. Amounts represent percentage of total portfolio annualized contractual base rental revenue.

#### **Change in GAAP/Cash Rents (Leases Commenced):**

Calculated as the change between GAAP/cash rents for new/renewed leases and the expiring GAAP/cash rents for the same space. Excludes leases for which the space was vacant longer than one year, or vacant when the property was acquired by the Company.

#### **Change in GAAP/Cash Rents (Leases Executed):**

Calculated as the change between GAAP/cash rents for signed leases and the expiring GAAP/cash rents for the same space. Excludes leases for which the space was vacant longer than one year, or vacant when the property was acquired by the Company.

#### **Estimated Stabilization Date (Development):**

Management's estimation of the earlier of stabilized occupancy (95%) or one year from the date of the cessation of major base building construction activities for office and retail properties and upon substantial completion for residential properties.

#### **FAD Payout Ratio:**

Calculated as current-quarter dividends accrued to common stockholders and common unitholders (excluding dividend equivalents accrued to restricted stock unitholders) divided by FAD.

#### **First Generation Capital Expenditures:**

Capital expenditures for newly acquired space, newly developed, redeveloped, or repositioned space. These costs are not subtracted in our calculation of FAD.

#### **Fixed Charge Coverage Ratio:**

Calculated as EBITDA, as adjusted, divided by gross interest expense (excluding amortization of deferred debt costs and debt discounts/premiums) and current year accrued preferred dividends.

#### **FFO Payout Ratio:**

Calculated as current-quarter dividends accrued to common stockholders and common unitholders (excluding dividend equivalents accrued to restricted stock unitholders) divided by FFO attributable to common stockholders and unitholders.

# Kilroy Realty Corporation

## Third Quarter 2019 Supplemental Financial Report

---

### Definitions Included in Supplemental, continued

**GAAP Effective Rate:**

The rate at which interest expense is recorded for financial reporting purposes, which reflects the amortization of any discounts/premiums, excluding debt issuance costs.

**Interest Coverage Ratio:**

Calculated as EBITDA, as adjusted, divided by gross interest expense (excluding amortization of deferred debt costs and debt discounts/premiums).

**Net Effect of Straight-Line Rents:**

Represents the straight-line rent income recognized during the period offset by cash received during the period that was applied to deferred rents receivable balances for terminated leases and the provision for bad debts recorded for deferred rent receivable balances.

**Net Operating Income Margins:**

Calculated as Net Operating Income divided by total revenues.

**Retention Rates (Leases Commenced):**

Calculated as the percentage of space either renewed or expanded into by existing tenants or subtenants at lease expiration.

**Same Store Portfolio:**

Our Same Store portfolio includes all of our properties owned and included in our stabilized portfolio for two comparable reporting periods, i.e., owned and included in our stabilized portfolio as of January 1, 2018 and still owned and included in the stabilized portfolio as of September 30, 2019. It does not include undeveloped land, development and redevelopment properties currently committed for construction, under construction, or in the tenant improvement phase and properties held-for-sale. We define redevelopment properties as those projects for which we expect to spend significant development and construction costs on existing or acquired buildings pursuant to a formal plan, the intended result of which is a higher economic return on the property.

**Stated Interest Rate:**

The rate at which interest expense is recorded per the respective loan documents, excluding the impact of the amortization of any debt discounts/premiums.

**Tenant Improvement Phase:**

Represents projects that have reached cold shell condition and are ready for tenant improvements, which may require additional major base building construction before being placed in service.

# Kilroy Realty Corporation

## Third Quarter 2019 Supplemental Financial Report

### Reconciliation of Net Income Available to Common Stockholders to Same Store Net Operating Income (unaudited, \$ in thousands)

	Three Months Ended September 30,		Nine Months Ended September 30,	
	2019	2018	2019	2018
<b>Net Income Available to Common Stockholders</b>	<b>\$ 43,846</b>	<b>\$ 34,400</b>	<b>\$ 122,943</b>	<b>\$ 98,195</b>
Net income attributable to noncontrolling common units of the Operating Partnership	852	691	2,423	2,008
Net income attributable to noncontrolling interests in consolidated property partnerships	3,600	3,219	11,941	10,833
<b>Net Income</b>	<b>48,298</b>	<b>38,310</b>	<b>137,307</b>	<b>111,036</b>
Adjustments:				
General and administrative expenses	22,576	19,277	65,774	56,599
Leasing costs	1,192	—	5,599	—
Depreciation and amortization	69,230	62,700	203,617	189,421
Interest income and other net investment loss (gain)	(761)	(342)	(3,205)	(1,147)
Interest expense	11,635	11,075	34,605	37,285
Gains on sales of depreciable operating properties	—	—	(7,169)	—
<b>Net Operating Income, as defined <sup>(1)</sup></b>	<b>152,170</b>	<b>131,020</b>	<b>436,528</b>	<b>393,194</b>
Wholly-Owned Properties	131,976	114,613	389,644	340,693
Consolidated property partnerships: <sup>(2)</sup>				
100 First Street <sup>(3)</sup>	5,934	2,345	5,153	11,601
303 Second Street <sup>(3)</sup>	8,349	8,303	24,219	23,631
Crossing/900 <sup>(4)</sup>	5,911	5,759	17,512	17,269
<b>Net Operating Income, as defined <sup>(1)</sup></b>	<b>152,170</b>	<b>131,020</b>	<b>436,528</b>	<b>393,194</b>
Non-Same Store GAAP Net Operating Income <sup>(5)</sup>	(19,959)	(8,907)	(48,371)	(25,179)
<b>Same Store GAAP Net Operating Income</b>	<b>132,211</b>	<b>122,113</b>	<b>388,157</b>	<b>368,015</b>
GAAP to Cash Adjustments:				
GAAP Operating Revenues Adjustments, net <sup>(6)</sup>	(16,326)	(11,661)	(55,168)	(33,907)
GAAP Operating Expenses Adjustments, net <sup>(7)</sup>	3	1,454	(29)	6,552
<b>Same Store Cash Net Operating Income</b>	<b>\$ 115,888</b>	<b>\$ 111,906</b>	<b>\$ 332,960</b>	<b>\$ 340,660</b>

(1) Please refer to pages 31-32 for Management Statements on Net Operating Income, Same Store Net Operating Income and Same Store Cash Net Operating Income.

(2) Reflects GAAP Net Operating Income for all periods presented.

(3) For all periods presented, an unrelated third party entity owned approximately 44% common equity interests in two properties located at 100 First Street and 303 Second Street in San Francisco, CA.

(4) For all periods presented, an unrelated third party entity owned an approximate 7% common equity interest in two properties located at 900 Jefferson Avenue and 900 Middlefield Road in Redwood City, CA.

(5) Includes the results of three office properties we acquired in the first quarter of 2018, one office property we acquired in the fourth quarter of 2018, eleven properties disposed of during the fourth quarter of 2018, one office property disposed of during the second quarter of 2019, one office property we acquired in the third quarter of 2019, and our in-process and future development projects.

(6) Includes the net effect of straight-line rents, amortization of deferred revenue related to tenant-funded tenant improvements and amortization of above and below market lease intangibles.

(7) Includes the amortization of above and below market lease intangibles for ground leases and the provision for bad debts.



# Kilroy Realty Corporation

## Third Quarter 2019 Supplemental Financial Report

### Reconciliation of Net Income Available to Common Stockholders to EBITDA, as Adjusted (unaudited, \$ in thousands)

	Three Months Ended September 30,	
	2019	2018
<b>Net Income Available to Common Stockholders</b>	\$ 43,846	\$ 34,400
Interest expense	11,635	11,075
Depreciation and amortization	69,230	62,700
Net income attributable to noncontrolling common units of the Operating Partnership	852	691
Net income attributable to noncontrolling interests in consolidated property partnerships	3,600	3,219
<b>EBITDA, as adjusted <sup>(1)</sup></b>	<b>\$ 129,163</b>	<b>\$ 112,085</b>

(1) Please refer to page 32 for a Management Statement on EBITDA, as adjusted. The Company's calculation of EBITDA, as adjusted, is the same as EBITDAre, as defined by NAREIT, as the Company does not have any unconsolidated joint ventures.

37

[\(Back To Top\)](#)

### Section 3: EX-99.2 (EXHIBIT 99.2)

Exhibit 99.2



**Contact:**

Tyler H. Rose  
Executive Vice President  
and Chief Financial Officer  
(310) 481-8484  
or  
Michelle Ngo  
Senior Vice President  
and Treasurer  
(310) 481-8581

**FOR RELEASE:**  
October 23, 2019

**KILROY REALTY CORPORATION REPORTS  
THIRD QUARTER FINANCIAL RESULTS**

LOS ANGELES, October 23, 2019 - Kilroy Realty Corporation (NYSE: **KRC**) today reported financial results for its third quarter ended September 30, 2019.

**Third Quarter Highlights**

***Financial Results***

- Net income available to common stockholders per share of \$0.41
- Funds from operations available to common stockholders and unitholders ("FFO") per share of \$1.01
- Revenues of \$215.5 million

***Stabilized Portfolio***

- Stabilized portfolio was 92.1% occupied and 97.3% leased at September 30, 2019

- Signed approximately 484,000 square feet of new or renewing leases, increasing the year to date total to 1.6 million square feet

***Finance***

- In September, completed a public offering of \$500.0 million of 10-year senior unsecured notes at 3.050% due February 2030

***Development***

- In August, completed the acquisition of a 2.3-acre land site in the East Village submarket of San Diego for a cash purchase price of \$40.0 million. The site is fully entitled for the development of a mixed-use project. Currently, there are three existing buildings that are leased by the prior owner through the first half of 2021

- In September, completed construction on 237 residential units, the first of three phases of the residential development at the company's One Paseo mixed-use project in the Del Mar submarket of San Diego. Phase I is currently 33% leased
- In September, commenced construction on 2100 Kettner, a 200,000 square foot office project in the Little Italy submarket of downtown San Diego. The project has a total estimated investment of \$140.0 million

### **Results for the Quarter Ended September 30, 2019**

For the third quarter ended September 30, 2019, KRC reported net income available to common stockholders of \$43.8 million, or \$0.41 per share, compared to \$34.4 million, or \$0.33 per share, in the third quarter of 2018. FFO in the third quarter of 2019 was \$109.2 million, or \$1.01 per share, compared to \$94.2 million, or \$0.90 per share in the third quarter of 2018.

All per share amounts in this report are presented on a diluted basis.

### **Net Income Available to Common Stockholders / FFO Guidance and Outlook**

The company has updated its guidance range of NAREIT-defined FFO per diluted share for its fiscal year 2019 to \$3.82 to \$3.88 per share with a midpoint of \$3.85 per share, reflecting management's views on current and future market conditions, including assumptions with respect to rental rates, occupancy levels, and the earnings impact of events referenced in this press release.

	Full Year 2019 Range	
	Low End	High End
Net income available to common stockholders per share - diluted	\$ 1.59	\$ 1.65
Weighted average common shares outstanding - diluted <sup>(1)</sup>	105,500	105,500
Net income available to common stockholders	\$ 168,000	\$ 174,000
Adjustments:		
Net income attributable to noncontrolling common units of the Operating Partnership	3,300	3,500
Net income attributable to noncontrolling interests in consolidated property partnerships	16,500	19,500
Depreciation and amortization of real estate assets	256,000	256,000
Gains on sales of depreciable real estate	(7,169)	(7,169)
Funds From Operations attributable to noncontrolling interests in consolidated property partnerships	(26,000)	(29,000)
Funds From Operations <sup>(2)</sup>	\$ 410,631	\$ 416,831
Weighted average common shares/units outstanding – diluted <sup>(3)</sup>	107,500	107,500
Funds From Operations per common share/unit – diluted <sup>(2)(3)</sup>	\$ 3.82	\$ 3.88

Key 2019 assumptions include:

- Flat same store cash net operating income
- Year-end occupancy of 94.0% to 95.0%
- Total remaining development spending of approximately \$125.0 million to \$150.0 million

(1) Calculated based on estimated weighted average shares outstanding including non-participating share-based awards.

(2) See management statement for FFO at end of release.

(3) Calculated based on weighted average shares outstanding including participating and non-participating share-based awards, dilutive impact of stock options, contingently issuable shares, and shares issuable under forward equity sale agreements and assuming the exchange of all common limited partnership units outstanding. Reported amounts are attributable to common stockholders, common unitholders and restricted stock unitholders.

The company's guidance estimates for the full year 2019, and the reconciliation of net income available to common stockholders per share - diluted and FFO per share and unit - diluted included within this press release,

reflect management's views on current and future market conditions, including assumptions with respect to rental rates, occupancy levels, and the earnings impact of the events referenced in this press release. Although these guidance estimates reflect the impact on the company's operating results of an assumed range of future disposition activity, these guidance estimates do not include any estimates of possible future gains or losses from possible future dispositions because the magnitude of gains or losses on sales of depreciable operating properties, if any, will depend on the sales price and depreciated cost basis of the disposed assets at the time of disposition, information that is not known at the time the company provides guidance, and the timing of any gain recognition will depend on the closing of the dispositions, information that is also not known at the time the company provides guidance and may occur after the relevant guidance period. We caution you not to place undue reliance on our assumed range of future disposition activity because any potential future disposition transactions will ultimately depend on the market conditions and other factors, including but not limited to the company's capital needs, the particular assets being sold and the company's ability to defer some or all of the taxable gain on the sales. These guidance estimates also do not include the impact on operating results from potential future acquisitions, possible capital markets activity, possible future impairment charges or any events outside of the company's control. There can be no assurance that the company's actual results will not differ materially from these estimates.

### ***Conference Call and Audio Webcast***

KRC management will discuss updated earnings guidance for fiscal year 2019 during the company's October 24, 2019 earnings conference call. The call will begin at 10:00 a.m. Pacific Time and last approximately one hour. Those interested in listening via the Internet can access the conference call at <https://services.choruscall.com/links/krc191024.html>. It may be necessary to download audio software to hear the conference call. Those interested in listening via telephone can access the conference call at (866) 312-7299. International callers should dial (412) 317-1070. In order to bypass speaking to the operator on the day of the call, please pre-register anytime at <http://dpregrister.com/10126360>. A replay of the conference call will be available via telephone on October 24, 2019 through October 31, 2019 by dialing (877) 344-7529 and entering passcode 10126360. International callers should dial (412) 317-0088 and enter the same passcode. The replay will also be available on our website at <http://investors.kilroyrealty.com/CustomPage/Index?KeyGenPage=1073743647>.

### ***About Kilroy Realty Corporation***

Kilroy Realty Corporation (KRC), a publicly traded real estate investment trust and member of the S&P MidCap 400 Index, is one of the West Coast's premier landlords. The company has over 70 years of experience developing, acquiring and managing office and mixed-use real estate assets. The company provides physical work environments that foster creativity and productivity and serves a broad roster of dynamic, innovation-driven tenants, including technology, entertainment, digital media and health care companies.

At September 30, 2019, the company's stabilized portfolio totaled approximately 13.3 million square feet of office space located in the coastal regions of Los Angeles, San Diego, the San Francisco Bay Area and Greater Seattle and 200 residential units located in the Hollywood submarket of Los Angeles. The stabilized portfolio was 92.1% occupied and 97.3% leased. In addition, KRC had six projects totaling approximately 2.3 million square feet of office and life science space that were 63% leased and 564 residential units under construction. KRC also completed 237 residential units, with a third of the units leased, and had two projects in the tenant improvement phase, The Exchange on 16<sup>th</sup>, totaling approximately 750,000 square feet, with the office space fully leased to Dropbox, and 96,000 square feet of retail at One Paseo, which was 100% leased.

The company's commitment and leadership position in sustainability has been recognized by various industry groups across the world. In September 2019, the company was recognized by GRESB as the sustainability leader in the Americas across all asset classes for the fifth time. Other sustainability accolades include NAREIT's

Leader in the Light award for the past five years and the EPA's highest honor of ENERGY STAR Partner of the Year Sustained Excellence award for the past four years. The company is listed in the Dow Jones Sustainability World Index. At the end of the third quarter, the company's stabilized portfolio was 61% LEED certified and 72% of eligible properties were ENERGY STAR certified. More information is available at <http://www.kilroyrealty.com>.

### ***Forward-Looking Statements***

This press release contains forward-looking statements within the meaning of Section 27A of the Securities Act of 1933, as amended, and Section 21E of the Securities Exchange Act of 1934, as amended. Forward-looking statements are based on our current expectations, beliefs and assumptions, and are not guarantees of future performance. Forward-looking statements are inherently subject to uncertainties, risks, changes in circumstances, trends and factors that are difficult to predict, many of which are outside of our control. Accordingly, actual performance, results and events may vary materially from those indicated or implied in the forward-looking statements, and you should not rely on the forward-looking statements as predictions of future performance, results or events. Numerous factors could cause actual future performance, results and events to differ materially from those indicated in the forward-looking statements, including, among others: global market and general economic conditions and their effect on our liquidity and financial conditions and those of our tenants; adverse economic or real estate conditions generally, and specifically, in the States of California and Washington; risks associated with our investment in real estate assets, which are illiquid, and with trends in the real estate industry; defaults on or non-renewal of leases by tenants; any significant downturn in tenants' businesses; our ability to re-lease property at or above current market rates; costs to comply with government regulations, including environmental remediation; the availability of cash for distribution and debt service and exposure to risk of default under debt obligations; increases in interest rates and our ability to manage interest rate exposure; the availability of financing on attractive terms or at all, which may adversely impact our future interest expense and our ability to pursue development, redevelopment and acquisition opportunities and refinance existing debt; a decline in real estate asset valuations, which may limit our ability to dispose of assets at attractive prices or obtain or maintain debt financing, and which may result in write-offs or impairment charges; significant competition, which may decrease the occupancy and rental rates of properties; potential losses that may not be covered by insurance; the ability to successfully complete acquisitions and dispositions on announced terms; the ability to successfully operate acquired, developed and redeveloped properties; the ability to successfully complete development and redevelopment projects on schedule and within budgeted amounts; delays or refusals in obtaining all necessary zoning, land use and other required entitlements, governmental permits and authorizations for our development and redevelopment properties; increases in anticipated capital expenditures, tenant improvement and/or leasing costs; defaults on leases for land on which some of our properties are located; adverse changes to, or enactment or implementations of, tax laws or other applicable laws, regulations or legislation, as well as business and consumer reactions to such changes; risks associated with joint venture investments, including our lack of sole decision-making authority, our reliance on co-venturers' financial condition and disputes between us and our co-venturers; environmental uncertainties and risks related to natural disasters; and our ability to maintain our status as a REIT. These factors are not exhaustive and additional factors could adversely affect our business and financial performance. For a discussion of additional factors that could materially adversely affect our business and financial performance, see the factors included under the caption "Risk Factors" in our annual report on Form 10-K for the year ended December 31, 2018 and our other filings with the Securities and Exchange Commission. All forward-looking statements are based on currently available information and speak only as of the dates on which they are made. We assume no obligation to update any forward-looking statement made in this press release that becomes untrue because of subsequent events, new information or otherwise, except to the extent we are required to do so in connection with our ongoing requirements under federal securities laws.

**KILROY REALTY CORPORATION**  
**SUMMARY OF QUARTERLY RESULTS**  
(unaudited; in thousands, except per share data)

	Three Months Ended September 30,		Nine Months Ended September 30,	
	2019	2018	2019	2018
Revenues <sup>(1)</sup>	\$ 215,525	\$ 186,562	\$ 617,219	\$ 556,456
Net income available to common stockholders <sup>(1)</sup>	\$ 43,846	\$ 34,400	\$ 122,943	\$ 98,195
Weighted average common shares outstanding – basic	104,841	100,677	102,253	99,711
Weighted average common shares outstanding – diluted	105,360	101,228	102,872	100,209
Net income available to common stockholders per share – basic <sup>(1)</sup>	\$ 0.41	\$ 0.34	\$ 1.19	\$ 0.97
Net income available to common stockholders per share – diluted <sup>(1)</sup>	\$ 0.41	\$ 0.33	\$ 1.18	\$ 0.97
Funds From Operations <sup>(1)(2)(3)</sup>	\$ 109,243	\$ 94,247	\$ 308,960	\$ 279,161
Weighted average common shares/units outstanding – basic <sup>(4)</sup>	107,981	103,841	105,400	102,923
Weighted average common shares/units outstanding – diluted <sup>(5)</sup>	108,500	104,393	106,020	103,421
Funds From Operations per common share/unit – basic <sup>(1)(3)</sup>	\$ 1.01	\$ 0.91	\$ 2.93	\$ 2.71
Funds From Operations per common share/unit – diluted <sup>(1)(3)</sup>	\$ 1.01	\$ 0.90	\$ 2.91	\$ 2.70
Common shares outstanding at end of period			106,012	100,747
Common partnership units outstanding at end of period			2,023	2,025
Total common shares and units outstanding at end of period			108,035	102,772
			<b>September 30, 2019</b>	<b>September 30, 2018</b>
Stabilized office portfolio occupancy rates: <sup>(6)</sup>				
Greater Los Angeles			95.1%	94.7%
Orange County			N/A	89.6%
San Diego County			90.4%	92.6%
San Francisco Bay Area			89.1%	93.8%
Greater Seattle			97.2%	91.5%
Weighted average total			92.1%	93.5%
Total square feet of stabilized office properties owned at end of period: <sup>(6)</sup>				
Greater Los Angeles			3,872	4,182
Orange County			N/A	272
San Diego County			2,048	2,054
San Francisco Bay Area			5,600	5,317
Greater Seattle			1,802	2,066
Total			13,322	13,891

(1) Effective January 1, 2019, the company adopted ASC 842 “Leases.” Please refer to our consolidated statements of operations for a description of the changes made to our consolidated financial statements. In accordance with the adoption of the new standard, previously reported periods are not restated for the impact of the standard.

(2) Reconciliation of Net income available to common stockholders to Funds From Operations available to common stockholders and unitholders and management statement on Funds From Operations are included after the Consolidated Statements of Operations.

(3) Reported amounts are attributable to common stockholders, common unitholders, and restricted stock unitholders.

(4) Calculated based on weighted average shares outstanding including participating share-based awards (i.e. nonvested stock and certain time based restricted stock units) and assuming the exchange of all common limited partnership units outstanding.

(5) Calculated based on weighted average shares outstanding including participating and non-participating share-based awards, dilutive impact of stock options, contingently issuable shares, and shares issuable under forward equity sale agreements and assuming the exchange of all common limited partnership units outstanding.

(6) Occupancy percentages and total square feet reported are based on the company’s stabilized office portfolio for the periods presented. Occupancy percentages and total square feet shown for September 30, 2018 include the office properties that were sold subsequent to September 30, 2018.

**KILROY REALTY CORPORATION**  
**CONSOLIDATED BALANCE SHEETS**  
(unaudited; in thousands)

	<u>September 30, 2019</u>	<u>December 31, 2018</u>
<b>ASSETS</b>		
<b>REAL ESTATE ASSETS:</b>		
Land and improvements	\$ 1,315,448	\$ 1,160,138
Buildings and improvements	5,770,226	5,207,984
Undeveloped land and construction in progress	1,892,169	2,058,510
Total real estate assets held for investment	8,977,843	8,426,632
Accumulated depreciation and amortization	(1,505,785)	(1,391,368)
Total real estate assets held for investment, net	7,472,058	7,035,264
Real estate assets and other assets held for sale, net	77,751	—
Cash and cash equivalents	297,620	51,604
Restricted cash	6,300	119,430
Marketable securities	26,188	21,779
Current receivables, net	34,116	20,176
Deferred rent receivables, net	314,812	267,007
Deferred leasing costs and acquisition-related intangible assets, net	202,063	197,574
Right of use ground lease assets <sup>(1)</sup>	83,200	—
Prepaid expenses and other assets, net	109,707	52,873
<b>TOTAL ASSETS</b>	<b>\$ 8,623,815</b>	<b>\$ 7,765,707</b>
<b>LIABILITIES AND EQUITY</b>		
<b>LIABILITIES:</b>		
Secured debt, net	\$ 259,027	\$ 335,531
Unsecured debt, net	3,048,209	2,552,070
Unsecured line of credit	—	45,000
Accounts payable, accrued expenses and other liabilities	439,081	374,415
Ground lease liabilities <sup>(1)</sup>	87,617	—
Accrued dividends and distributions	53,205	47,559
Deferred revenue and acquisition-related intangible liabilities, net	134,828	149,646
Rents received in advance and tenant security deposits	57,428	60,225
Liabilities and deferred revenue of real estate assets held for sale	4,911	—
Total liabilities	4,084,306	3,564,446
<b>EQUITY:</b>		
Stockholders' Equity		
Common stock	1,060	1,007
Additional paid-in capital	4,342,296	3,976,953
Distributions in excess of earnings	(78,707)	(48,053)
Total stockholders' equity	4,264,649	3,929,907
Noncontrolling Interests		
Common units of the Operating Partnership	81,393	78,991
Noncontrolling interests in consolidated property partnerships	193,467	192,363
Total noncontrolling interests	274,860	271,354
Total equity	4,539,509	4,201,261
<b>TOTAL LIABILITIES AND EQUITY</b>	<b>\$ 8,623,815</b>	<b>\$ 7,765,707</b>

(1) Effective January 1, 2019, the company adopted ASC 842 "Leases," which requires right of use assets and liabilities for leases in which the company is the lessee to be presented on the company's consolidated balance sheets.

**KILROY REALTY CORPORATION**  
**CONSOLIDATED STATEMENTS OF OPERATIONS**  
(unaudited; in thousands, except per share data)

	Three Months Ended September 30,		Nine Months Ended September 30,	
	2019	2018	2019	2018
<b>REVENUES <sup>(1)</sup></b>				
Rental income	\$ 212,321	\$ 162,288	\$ 609,332	\$ 489,674
Tenant reimbursements	—	21,754	—	60,471
Other property income	3,204	2,520	7,887	6,311
Total revenues	<u>215,525</u>	<u>186,562</u>	<u>617,219</u>	<u>556,456</u>
<b>EXPENSES</b>				
Property expenses <sup>(1)</sup>	41,308	35,163	117,993	99,401
Real estate taxes <sup>(1)</sup>	19,998	17,462	56,563	52,421
Provision for bad debts <sup>(1)</sup>	—	1,338	—	6,714
Ground leases <sup>(1)</sup>	2,049	1,579	6,135	4,726
General and administrative expenses	22,576	19,277	65,774	56,599
Leasing costs <sup>(1)</sup>	1,192	—	5,599	—
Depreciation and amortization	69,230	62,700	203,617	189,421
Total expenses	<u>156,353</u>	<u>137,519</u>	<u>455,681</u>	<u>409,282</u>
<b>OTHER (EXPENSES) INCOME</b>				
Interest income and other net investment gain	761	342	3,205	1,147
Interest expense	(11,635)	(11,075)	(34,605)	(37,285)
Gains on sales of depreciable operating properties	—	—	7,169	—
Total other (expenses) income	<u>(10,874)</u>	<u>(10,733)</u>	<u>(24,231)</u>	<u>(36,138)</u>
<b>NET INCOME</b>				
	<u>48,298</u>	<u>38,310</u>	<u>137,307</u>	<u>111,036</u>
Net income attributable to noncontrolling common units of the Operating Partnership	(852)	(691)	(2,423)	(2,008)
Net income attributable to noncontrolling interests in consolidated property partnerships	(3,600)	(3,219)	(11,941)	(10,833)
Total income attributable to noncontrolling interests	<u>(4,452)</u>	<u>(3,910)</u>	<u>(14,364)</u>	<u>(12,841)</u>
<b>NET INCOME AVAILABLE TO COMMON STOCKHOLDERS</b>				
	<u>\$ 43,846</u>	<u>\$ 34,400</u>	<u>\$ 122,943</u>	<u>\$ 98,195</u>
Weighted average common shares outstanding – basic	104,841	100,677	102,253	99,711
Weighted average common shares outstanding – diluted	105,360	101,228	102,872	100,209
Net income available to common stockholders per share – basic	<u>\$ 0.41</u>	<u>\$ 0.34</u>	<u>\$ 1.19</u>	<u>\$ 0.97</u>
Net income available to common stockholders per share – diluted	<u>\$ 0.41</u>	<u>\$ 0.33</u>	<u>\$ 1.18</u>	<u>\$ 0.97</u>

(1) Effective January 1, 2019, the company adopted ASC 842 “Leases,” which required the following changes for all periods beginning and subsequent to January 1, 2019. In accordance with the adoption of the new standard under the modified retrospective method, previously reported periods are not restated for the impact of the standard.

- All lease related revenue required to be reported as a single component within rental income. For the three months ended September 30, 2019, rental income includes \$30.4 million of tenant reimbursements and \$3.6 million of gross lease termination fees. For the nine months ended September 30, 2019, rental income includes \$82.4 million of tenant reimbursements and \$10.5 million of gross lease termination fees.

- Rental income to be presented net of provision for bad debts. For the three and nine months ended September 30, 2019, rental income includes a provision for bad debts of \$0.1 million and a recovery of provision for bad debts of \$3.2 million, respectively.

- All property expenses paid directly by the company and reimbursed by the tenant to be presented on a gross basis. For the three and nine months ended September 30, 2019, rental income and property expenses both include \$4.1 million and \$10.1 million, respectively, of additional tenant reimbursements and the related property expenses, which were previously shown net in property expenses in prior periods. This change has no impact to net income, Net Operating Income or Funds From Operations.

- Non-tenant parking income to be presented in other property income instead of rental income since recognized under ASC 606 “Revenue from Contracts with Customers” and outside the scope of ASC 842 “Leases.”

- Real estate taxes for properties where the company is a lessee under ground leases to be presented in ground leases instead of real estate taxes. For the three and nine months ended September 30, 2019, ground leases includes \$0.5 million and \$1.4 million, respectively, of property taxes for properties where the Company is a lessee.

- Indirect leasing costs to be expensed as incurred and reported in leasing costs.



**KILROY REALTY CORPORATION**  
**FUNDS FROM OPERATIONS**  
(unaudited; in thousands, except per share data)

	Three Months Ended September 30,		Nine Months Ended September 30,	
	2019	2018	2019	2018
Net income available to common stockholders	\$ 43,846	\$ 34,400	\$ 122,943	\$ 98,195
Adjustments:				
Net income attributable to noncontrolling common units of the Operating Partnership	852	691	2,423	2,008
Net income attributable to noncontrolling interests in consolidated property partnerships	3,600	3,219	11,941	10,833
Depreciation and amortization of real estate assets	67,985	61,609	199,967	186,242
Gains on sales of depreciable real estate	—	—	(7,169)	—
Funds From Operations attributable to noncontrolling interests in consolidated property partnerships	(7,040)	(5,672)	(21,145)	(18,117)
Funds From Operations <sup>(1)(2)(3)</sup>	<u>\$ 109,243</u>	<u>\$ 94,247</u>	<u>\$ 308,960</u>	<u>\$ 279,161</u>
Weighted average common shares/units outstanding – basic <sup>(4)</sup>	107,981	103,841	105,400	102,923
Weighted average common shares/units outstanding – diluted <sup>(5)</sup>	108,500	104,393	106,020	103,421
Funds From Operations per common share/unit – basic <sup>(2)</sup>	<u>\$ 1.01</u>	<u>\$ 0.91</u>	<u>\$ 2.93</u>	<u>\$ 2.71</u>
Funds From Operations per common share/unit – diluted <sup>(2)</sup>	<u>\$ 1.01</u>	<u>\$ 0.90</u>	<u>\$ 2.91</u>	<u>\$ 2.70</u>

(1) We calculate Funds From Operations available to common stockholders and common unitholders (“FFO”) in accordance with the 2018 Restated White Paper on FFO approved by the Board of Governors of NAREIT. The White Paper defines FFO as net income or loss calculated in accordance with GAAP, excluding extraordinary items, as defined by GAAP, gains and losses from sales of depreciable real estate and impairment write-downs associated with depreciable real estate, plus real estate-related depreciation and amortization (excluding amortization of deferred financing costs and depreciation of non-real estate assets) and after adjustment for unconsolidated partnerships and joint ventures. Our calculation of FFO includes the amortization of deferred revenue related to tenant-funded tenant improvements and excludes the depreciation of the related tenant improvement assets. We also add back net income attributable to noncontrolling common units of the Operating Partnership because we report FFO attributable to common stockholders and common unitholders.

We believe that FFO is a useful supplemental measure of our operating performance. The exclusion from FFO of gains and losses from the sale of operating real estate assets allows investors and analysts to readily identify the operating results of the assets that form the core of our activity and assists in comparing those operating results between periods. Also, because FFO is generally recognized as the industry standard for reporting the operations of REITs, it facilitates comparisons of operating performance to other REITs. However, other REITs may use different methodologies to calculate FFO, and accordingly, our FFO may not be comparable to all other REITs.

Implicit in historical cost accounting for real estate assets in accordance with GAAP is the assumption that the value of real estate assets diminishes predictably over time. Since real estate values have historically risen or fallen with market conditions, many industry investors and analysts have considered presentations of operating results for real estate companies using historical cost accounting alone to be insufficient. Because FFO excludes depreciation and amortization of real estate assets, we believe that FFO along with the required GAAP presentations provides a more complete measurement of our performance relative to our competitors and a more appropriate basis on which to make decisions involving operating, financing and investing activities than the required GAAP presentations alone would provide.

However, FFO should not be viewed as an alternative measure of our operating performance because it does not reflect either depreciation and amortization costs or the level of capital expenditures and leasing costs necessary to maintain the operating performance of our properties, which are significant economic costs and could materially impact our results from operations.

- (2) Reported amounts are attributable to common stockholders, common unitholders, and restricted stock unitholders.
- (3) FFO available to common stockholders and unitholders includes amortization of deferred revenue related to tenant-funded tenant improvements of \$6.8 million and \$4.8 million for the three months ended September 30, 2019 and 2018, respectively, and \$14.9 million and \$13.7 million for the nine months ended September 30, 2019 and 2018, respectively.
- (4) Calculated based on weighted average shares outstanding including participating share-based awards (i.e. nonvested stock and certain time based restricted stock units) and assuming the exchange of all common limited partnership units outstanding.
- (5) Calculated based on weighted average shares outstanding including participating and non-participating share-based awards, dilutive impact of stock options, contingently issuable shares, and shares issuable under forward equity sale agreements and assuming the exchange of all common limited partnership units outstanding.