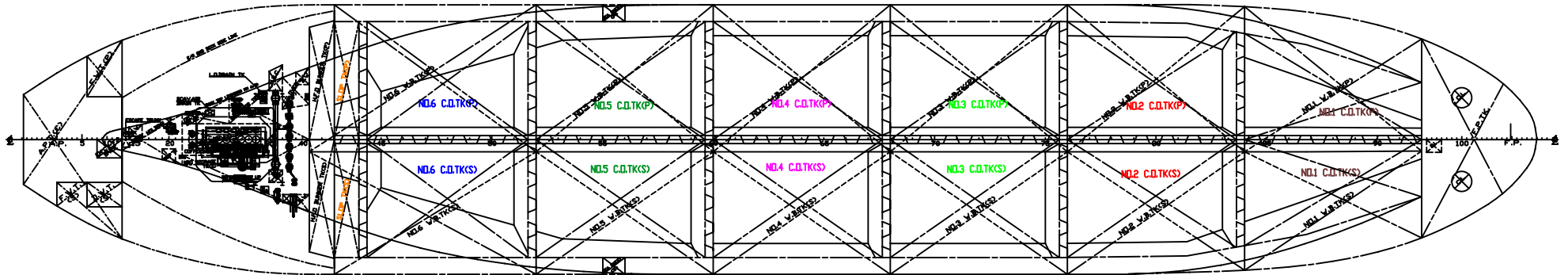


## OVERSEAS LOS ANGELES



### ARRANGEMENT

#### C.D & SLOP TANK

COMPARTMENTS	LOCATION (FR. NO.)	VOLUME		
		100% ( M <sup>3</sup> )	98% ( M <sup>3</sup> )	98% (BARREL)
NO.1 CARGO TANK (P)	83.6-92.0	3326.9	3260.4	20507.5
NO.1 CARGO TANK (S)	83.6-92.0	3326.9	3260.4	20507.5
NO.2 CARGO TANK (P)	75.6-84.0	4653.4	4560.3	28683.7
NO.2 CARGO TANK (S)	75.6-84.0	4653.4	4560.3	28683.7
NO.3 CARGO TANK (P)	67.6-76.0	4756.9	4661.8	29322.1
NO.3 CARGO TANK (S)	67.6-76.0	4756.9	4661.8	29322.1
NO.4 CARGO TANK (P)	59.6-68.0	4756.9	4661.8	29322.1
NO.4 CARGO TANK (S)	59.6-68.0	4756.9	4661.8	29322.1
NO.5 CARGO TANK (P)	51.6-60.0	4739.3	4644.6	29213.1
NO.5 CARGO TANK (S)	51.6-60.0	4739.3	4644.6	29213.1
NO.6 CARGO TANK (P)	44.0-52.0	4089.6	4007.8	25208.5
NO.6 CARGO TANK (S)	44.0-52.0	4089.6	4007.8	25208.5
SLOP TANK (P)	43.0-44.4	581.3	569.7	3583.3
SLOP TANK (S)	43.0-44.4	581.3	569.7	3583.3
T O T A L		53808.8	52732.6	331680.6

#### DEADWEIGHT

SEASONAL FREEBOARD	FREEBOARD (MM)	DRAFT (EXT.) (M)	DISPLACEMENT (MT)	DEADWEIGHT (MT)
TF	6086	12.739	58,988.8	49,654.8
F	6343	12.485	57,656.3	48,322.3
T	6358	12.470	57,577.5	48,243.5
S	6612	12.216	56,245.0	46,911.0
W	6866	11.962	54,917.3	45,583.3