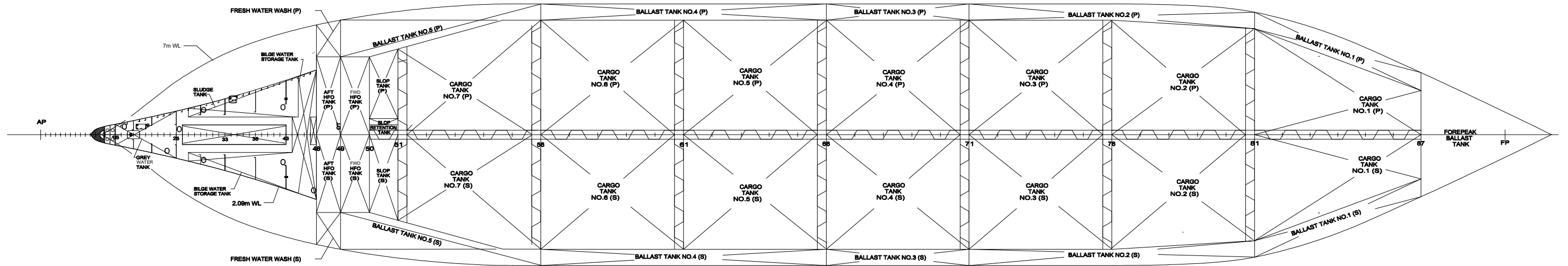


LBP  
OUTBOARD PROFILE



TANK TOP

PRINCIPAL CHARACTERISTICS

LENGTH OVERALL	188.9 m
LENGTH BETWEEN PERPENDICULARS	180.0 m
BEAM (MLD)	32.2 m
DEPTH, MOLDED TO MN DK @ SIDE	19.15 m
DEPTH, MOLDED TO MN DK @ C.L.	19.75 m
DESIGN DRAFT, MOLDED	11.2 m
DESIGN DRAFT, KEEL	11.216 m
SCANTLING DRAFT, MOLDED	12.2 m
SCANTLING DRAFT, KEEL	12.216 m
DESIGN DISPLACEMENT, TOTAL, S.W.	52588 tonnes
DEADWEIGHT CORRESPONDING TO DESIGN DISPLACEMENT, S.W.	40398 tonnes
LIGHTSHIP WEIGHT	12190 tonnes
LIGHTSHIP VERTICAL CENTER OF GRAVITY ABV B.L.	11.01 m
LIGHTSHIP LONG. CENTER OF GRAVITY FWD A.P.	79.94 m
GROSS TONNAGE	30770
NET TONNAGE	11071

CARGO TANKS		CAPACITY (m <sup>3</sup> ) 100% FULL	CAPACITY (m <sup>3</sup> ) 98% FULL	VCG (m) ABL	LCG (m) FROM AP	TCG (m) OCL + STBD	VMFS (5 deg)	
FRAME	TANK						(SLACK) (m <sup>3</sup> )	(98%) (m <sup>3</sup> )
81-87	CARGO TK#1 P	3190.85	3127.03	11.055	157.696	-4.931	1892.4	1525.5
81-87	CARGO TK#1 S	3190.85	3127.03	11.055	157.696	4.931	1892.4	1525.5
76-81	CARGO TK#2 P	3916.76	3838.42	10.982	139.758	-6.817	3677.8	3067.2
76-81	CARGO TK#2 S	3916.76	3838.42	10.982	139.758	6.817	3677.8	3067.2
71-76	CARGO TK#3 P	4063.13	3981.87	10.974	122.323	-7.062	4089.1	3424.4
71-76	CARGO TK#3 S	4063.13	3981.87	10.974	122.323	7.062	4089.1	3424.4
66-71	CARGO TK#4 P	4063.13	3981.87	10.974	104.773	-7.062	4089.1	3424.4
66-71	CARGO TK#4 S	4063.13	3981.87	10.974	104.773	7.062	4089.1	3424.4
61-66	CARGO TK#5 P	4063.13	3981.87	10.974	87.223	-7.062	4089.1	3424.4
61-66	CARGO TK#5 S	4063.13	3981.87	10.974	87.223	7.062	4089.1	3424.4
56-61	CARGO TK#6 P	4061.18	3979.96	10.978	69.676	-7.059	4089.1	3424.4
56-61	CARGO TK#6 S	4061.18	3979.96	10.978	69.676	7.059	4089.1	3424.4
51-56	CARGO TK#7 P	3563.08	3491.82	11.386	52.859	-6.742	3831.1	3195.4
51-56	CARGO TK#7 S	3563.08	3491.82	11.386	52.859	6.742	3831.1	3195.4
50-51	SLOP TK P	658.38	645.21	12.027	42.397	-7.212	601.7	520.2
50-51	SLOP TK S	774.88	759.38	11.903	42.387	6.288	935.9	730.9
50-51	SLOP RETENTION TK P	119.73	117.34	11.196	42.326	-1.035	3.5	0.9
TOTAL CARGO		55395.51	54287.60	11.064	102.244	0.00	53056.7	44223.9

**OSG** OSG Ship Management, Inc.  
302 Knights Run Ave., Suite 1200  
Tampa, FL 33602

**M/T OVERSEAS KEY WEST**